

AMBER WERCHON

PROPERTY · PEOPLE



33 Oxleigh Crescent Nambour QLD

4 2 2

Amber Werchon Property presents to the market 33 Oxleigh Crescent, Nambour; this shiny new home, highset with delightful views over park opposite and beyond into town, offers stylish, low maintenance living in a quiet well-established quality neighbourhood.

With attractive street appeal, the home exudes modern contemporary living which embraces a Queensland-style ambience. Complete with four generous sized bedrooms, two bathrooms, expansive open plan living flowing out to a covered timber deck, elegant light-filled kitchen, laundry and double lock up garage; it is family-sized and family-friendly.

Features include: stunning timber floors, stainless steel

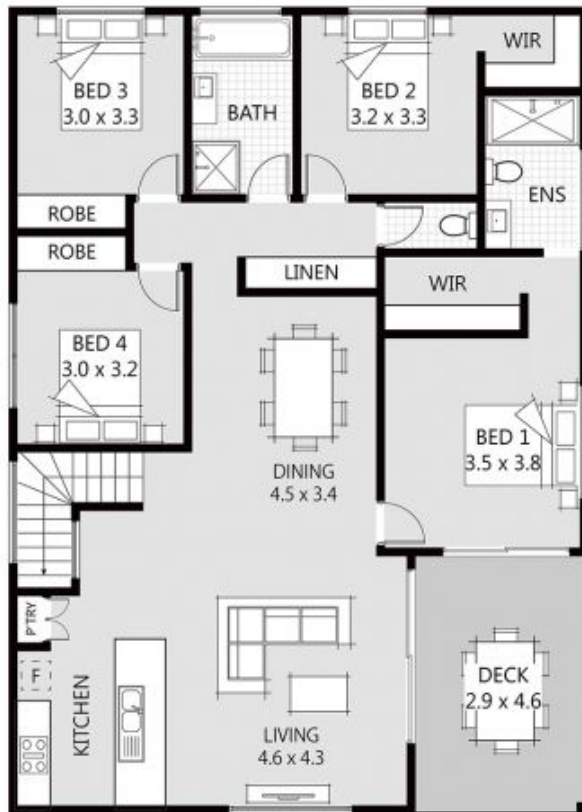
[For full version visit the website](https://www.amberwerchon.com.au/391284)

Type : House
Price : \$448,000
Land Size : 341 sqm
View : <https://www.amberwerchon.com.au/391284>
1



Amber Werchon
07 5430 0888

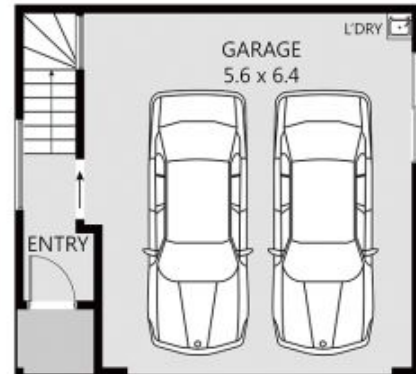
<https://www.amberwerchon.com.au>



FIRST FLOOR



33 Oxleigh Crescent
NAMBOUR



GROUND FLOOR

ARTIST'S IMPRESSION ONLY: While every attempt has been made to ensure the accuracy of this floor plan areas and measurements of doors, windows, rooms and all other items are approximate and no responsibility is taken for any error, omission, or mis-statement. This plan is for illustrative purposes only and should only be used as such by any prospective purchaser.

Floor plan by: www.realestatefloorplans.com.au