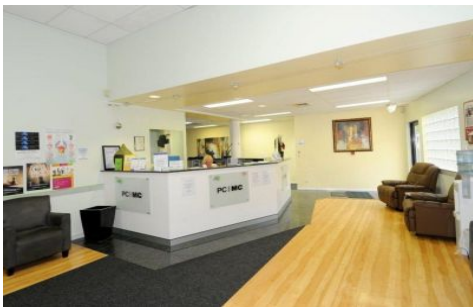


# AMBER WERCHON

PROPERTY · PEOPLE



## MAROCHYDORE

- \* Why not take advantage of the owner of this property retiring?
- \* 2 years into a solid 10 year lease with 5x5 options
- \* Secure and established medical tenant and specialists
- \* Returning \$153,032 pa with 5% annual increases each March
- \* 391sqm of floor space, constructed in 1995 and held since 1997
- \* 20 allocated carparks on title, including ambulance parking
- \* 3 entrances and receptions, currently two subleases in place
- \* First year into 5 + 5 year sublease to QML pathology
- \* Tenants have director's guarantees in place, a solid investment

**Type** : Offices  
**Price** : SOLD  
**Building Size** : 391 sqm  
**View** : <https://www.amberwerchon.com.au/408387>



**Amber Werchon**  
07 5430 0888

[For full version visit the website](https://www.amberwerchon.com.au)

<https://www.amberwerchon.com.au>