

# AMBER WERCHON

PROPERTY · PEOPLE



## 15 Solace Street Birtinya QLD

3  2  2 

Gavin Broderick and Daniel Mendes of Amber Werchon Property presents to the market, 15 Solace Street, Birtinya; this elegant double-storey lifestyle home in the Sunshine Coast's fastest growing suburb, close to beaches and major amenities, offers contemporary easy-care living of the highest calibre.

North-facing, the home is filled with natural light and circulates gentle breezes; complete with three bedrooms, two bathrooms plus powder room, stylish central kitchen, open plan living and dining, second living area on upper level, exclusive balcony off master bedroom, alfresco terrace, cosy east-facing courtyard, separate laundry, and double lock up garage with on-site parking for extra vehicles?size will surprise and delight.

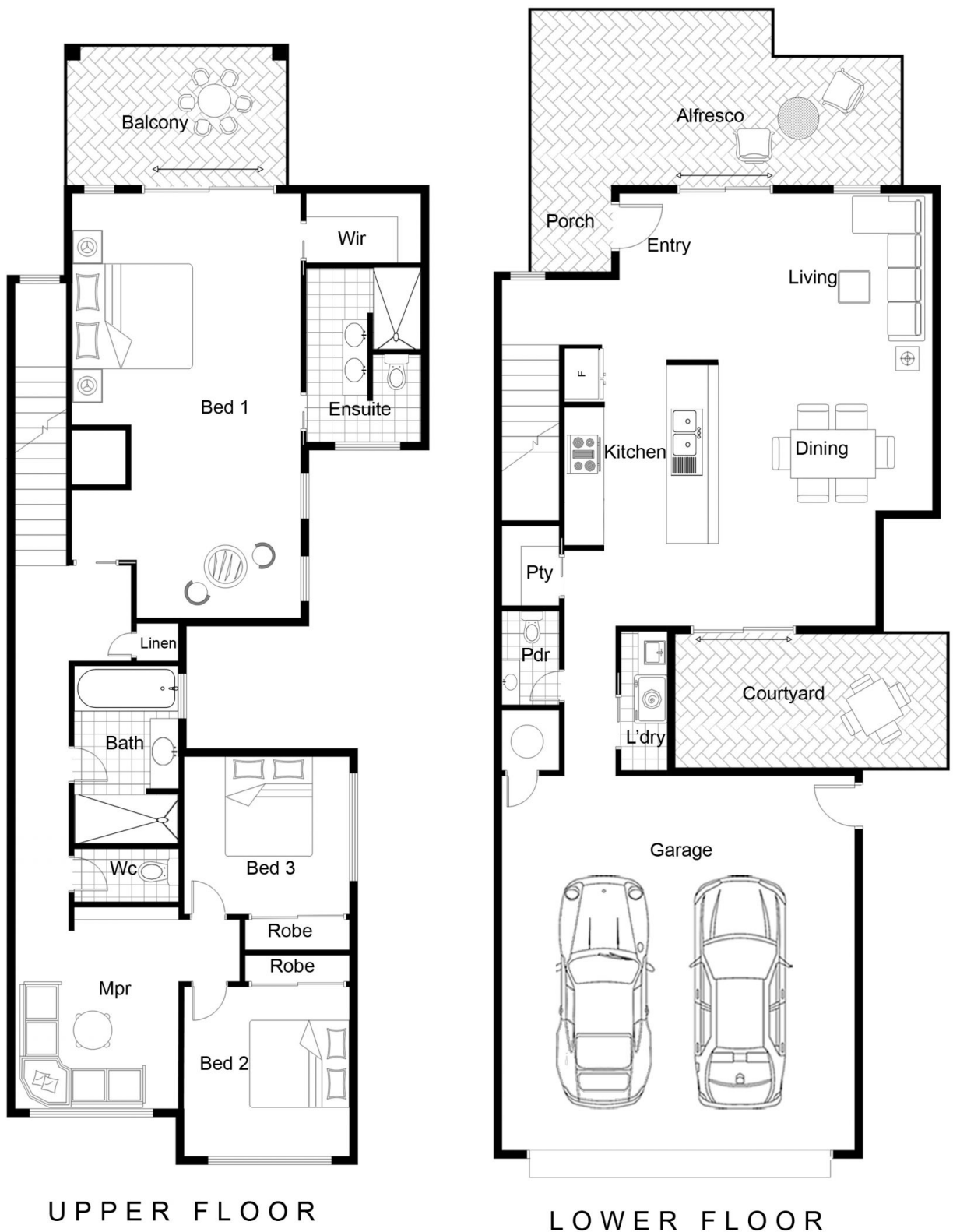
[For full version visit the website](https://www.amberwerchon.com.au/4194522)

**Type** : House  
**Price** : \$576,500  
**Building Size** : 204 sqm  
**Land Size** : 191 sqm  
**View** : <https://www.amberwerchon.com.au/4194522>



**Daniel Mendes**  
07 5430 0888

<https://www.amberwerchon.com.au>



UPPER FLOOR

LOWER FLOOR

This floor plan including furniture, fixture measurements and dimensions are approximate and for illustrative purposes only. Boxbrownie.com gives no guarantee, warranty or representation as to the accuracy and layout. All enquiries must be directed to the agent, vendor or party representing this floor plan.

15 Solace Street, Birtinya