

AMBER WERCHON

PROPERTY • PEOPLE



68 Nambour - Mapleton Road Nambour QLD

4 2 1

Amber Werchon Property presents to the market, 68 Nambour-Mapleton Road, Nambour; this immaculately presented family home with a versatile floor plan offering flexible options that could extend to dual living or working from home, sits in an elevated position on a leafy 741m² block with an east-facing aspect showcasing ocean glimpses.

Circa 1977, the home has great 'bones' and charm, emanating that welcoming warmth that houses of this vintage are known for; over two levels, it is complete with four bedrooms, three bathrooms, four toilets, separate living areas, large main kitchen on upper level, kitchenette on lower level, east facing patio plus east facing covered entertaining, laundry under, and single lock up carport plus

Type : House

Price : \$420,000

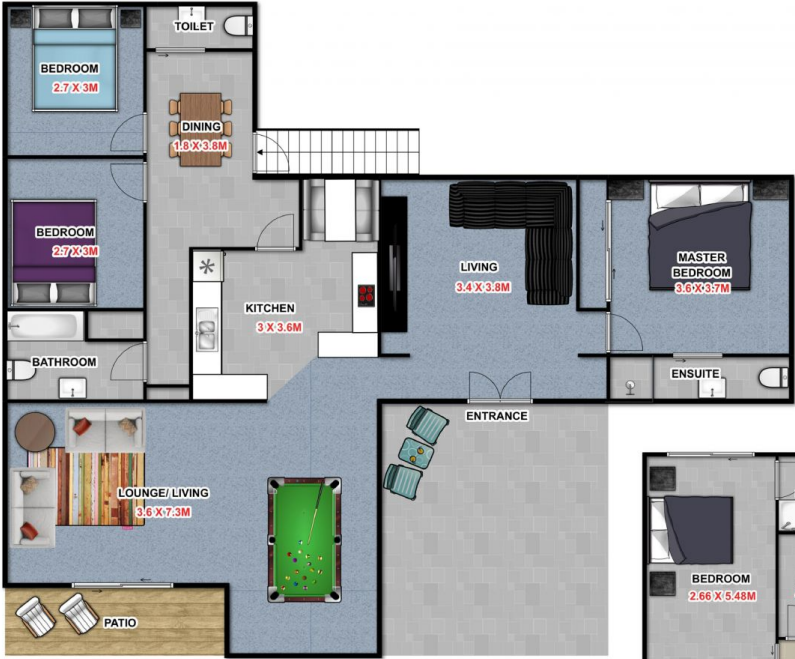
View : <https://www.amberwerchon.com.au/4368272>



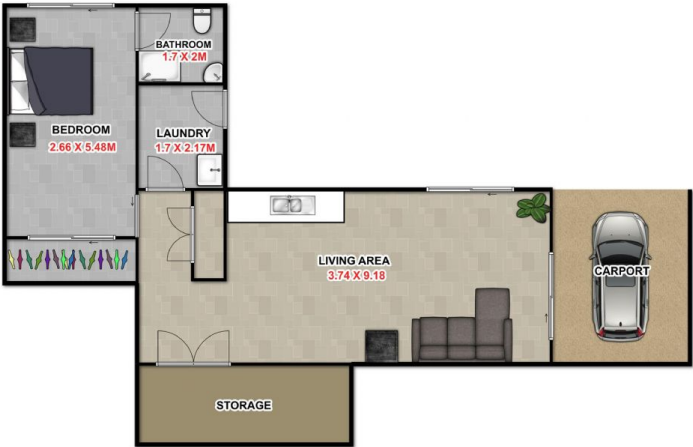
Amber Werchon
07 5430 0888

[For full version visit the website](https://www.amberwerchon.com.au)

<https://www.amberwerchon.com.au>



Upper Level



Lower Level

Artist impression

This floor plan is conceptual only. It is provided for illustrative purposes only and should not be relied upon. We make no guarantee as to the accuracy of this plan. All interested parties should make and rely on their own enquiries in determining the accuracy of the information contained in this floor plan.

NOT TO SCALE