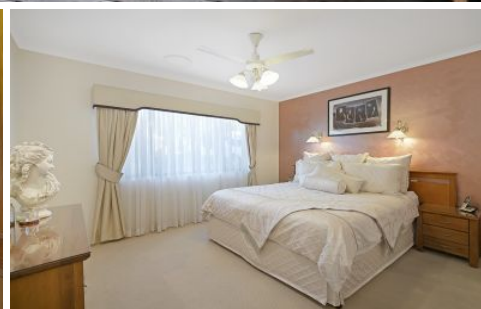


# AMBER WERCHON

PROPERTY · PEOPLE



10 Douglas Street Nambour QLD

6 3 2

Amber Werchon Property presents to the market, 10 Douglas Street, Nambour; this elegant family home, super-sized and showcasing European-infused influences in its décor and ambience, offers expansive living over two levels with great versatility.

Complete with six bedrooms, three bathrooms, multiple living areas, generous-sized central kitchen, cosy covered patio, massive covered timber deck for alfresco entertaining, double lock up garage plus side access, on a fully fenced 745m<sup>2</sup> with a good backyard for kids?this home is a very value-laden package for the large or extended family.

Rendered brick, the home has charming street appeal and

[For full version visit the website](https://www.amberwerchon.com.au)

**Type** : House  
**Price** : \$605,311.45  
**Land Size** : 745 sqm  
**View** : <https://www.amberwerchon.com.au/443253>  
2

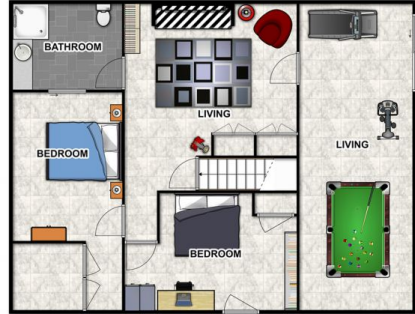


**Amber Werchon**  
07 5430 0888

<https://www.amberwerchon.com.au>



Upper Level



Lower Level

**Artist impression**

This floor plan is conceptual only. It is provided for illustrative purposes only and should not be relied upon. We make no guarantee as to the accuracy of this plan. All interested parties should make and rely on their own enquiries in determining the accuracy of the information contained in this floor plan.  
#N0Y TO SCALE.

10 Douglas St, Nambour QLD 4560