




AMBER WERCHON

PROPERTY · PEOPLE



23 Oxleigh Crescent Nambour QLD

4  2  5 

Amber Werchon Property presents to the market, 23 Oxleigh Crescent, Nambour; this double storey brick and tile classic in an elevated position on a massive fully fenced 1050m² block offers super-sized family living with dual living possibilities, in a dress circle well-established street close to town.

Complete with four bedrooms, separate living areas, two bathrooms, sunroom/study, modern kitchen, front verandah, rear covered north facing patio, separate laundry, underhouse storage, double lock up garage plus 12mx9m triple-bay shed; this is a home with generous proportions inside and out and masses of space to lock up the big boy's toys.

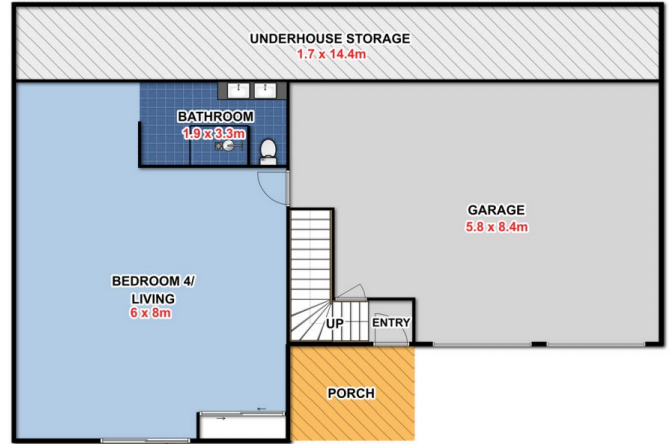
Type : House
Price : \$555,000
Land Size : 1050 sqm
View : <https://www.amberwerchon.com.au/4926313>



Amber Werchon
07 5430 0888

[For full version visit the website](https://www.amberwerchon.com.au)

<https://www.amberwerchon.com.au>



ARTIST ILLUSTRATION

THIS FLOOR PLAN IS CONCEPTUAL ONLY. IT IS PROVIDED FOR ILLUSTRATIVE PURPOSES AND SHOULD NOT BE RELIED UPON. WE MAKE NO GUARANTEE AS TO THE ACCURACY OF THIS PLAN. ALL INTERESTED PARTIES SHOULD MAKE AND RELY ON THEIR OWN ENQUIRIES IN DETERMINING THE ACCURACY AND INFORMATION CONTAINED ON THIS FLOOR PLAN.