

AMBER WERCHON

PROPERTY · PEOPLE



245 Mons School Road Buderim QLD

4 3 2

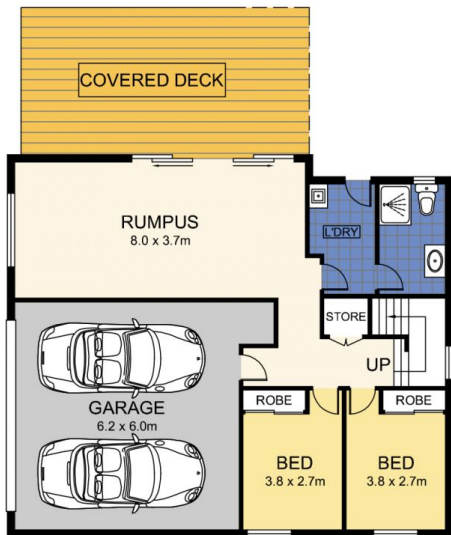
Hamish Bolderston and Trudi Fernandez present to the market 245 Mons School Road, Buderim; this Queenslander, circa 1940 was relocated and modernised just 10 years ago. This classic home is positioned on a beautifully landscaped 784m² block backing onto native bushland offers well-designed family friendly living across two levels, plus expansive alfresco entertaining for all occasions.

The upper storey/entry level is complete with an elegant master retreat with dressing room and ensuite ; a formal lounge with a decorative featured ceiling, formal dining room, office area, stylish granite kitchen, second bedroom and a main bathroom with bath. The large verandah which flows from the kitchen is covered with a view overlooking

Type : House
Price : Contact Agent
Land Size : 784 sqm
View : <https://www.amberwerchon.com.au/4932579>

[For full version visit the website](https://www.amberwerchon.com.au)

<https://www.amberwerchon.com.au>



LOWER LEVEL



ENTRY LEVEL

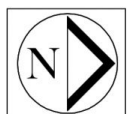


(Floor Plan For Illustrative Purposes Only)

Scale In metres. We give no guarantee, warranty or representation as to the accuracy and completeness of the floor plan. We recommend that you instruct your own surveyor to carry out an independent investigation of the property prior to relying on the accuracy and completeness of this plan. Floor Plan presented by The Floor Plan Specialist. www.thefloorplanspecialist.com.au

APPROXIMATE AREAS

- INTERNAL : 199 m²
- EXTERNAL : 76 m²
- GARAGE : 39 m²
- TOTAL AREA : 314 m²**
- LAND TOTAL : 784 m²**



245 Mons School Road, Buderim