

AMBER WERCHON

PROPERTY · PEOPLE



605/6 Wharf Street Maroochydore QLD

3  2  2 

Amber Werchon Property presents to the market 605/6 Wharf Street, Maroochydore. This sixth-floor apartment in the coveted 'Duporth Riverside' complex offers elegant waterfront living of the highest calibre with spectacular views from Mount Coolum, the Maroochy river mouth across to Pin Cushion Island and beyond to the ocean.

Offering one of the largest floor plans in the complex at 171m²; the apartment is complete with three bedrooms, two bathrooms, expansive open plan living flowing out to the north-east facing balcony. Rear balconies off the second and third bedrooms showcasing views to Buderim, light-filled central kitchen, separate laundry, and secure basement parking for two vehicles.

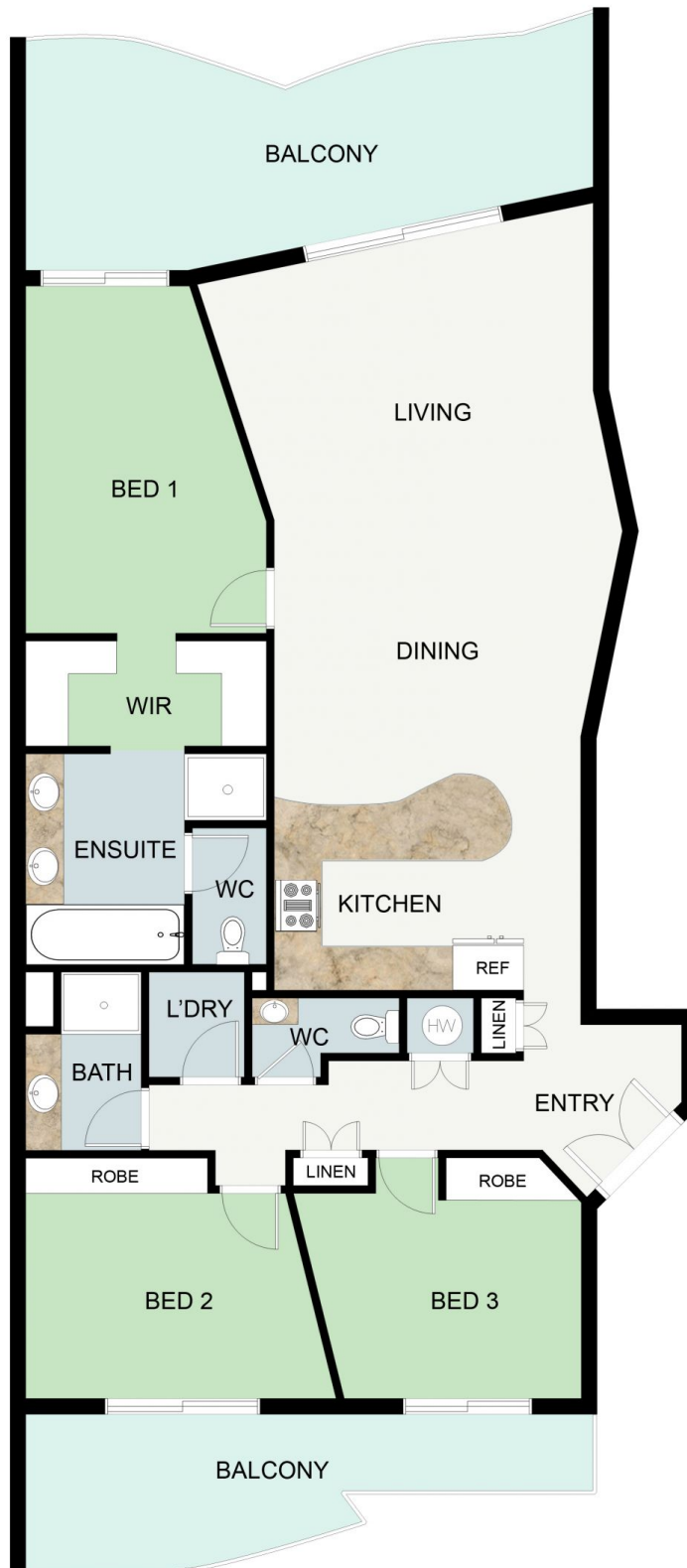
Type : Apartment
Price : \$1,140,000
Building Size : 171 sqm
Land Size : 171 sqm
View : <https://www.amberwerchon.com.au/5212304>



Amber Werchon
07 5430 0888

[For full version visit the website](https://www.amberwerchon.com.au)

<https://www.amberwerchon.com.au>



FLOOR PLAN

This floor plan including furniture, fixture measurements and dimensions are approximate and for illustrative purposes only. Boxbrownie.com gives no guarantee, warranty or representation as to the accuracy and layout. All enquiries must be directed to the agent, vendor or party representing this floor plan.

605/6 Wharf Street, Maroochydore