

AMBER WERCHON

PROPERTY • PEOPLE



58 Elisabeth Valley Place Ilkley QLD

6 4 5

Amber Werchon Property presents to the market, 58 Elisabeth Valley Place, Ilkley; this exceptional acreage property offering peaceful, private country-style living in a dress circle cul-de-sac, with a functional family home and fully approved guest house on 11 glorious and usable acres.

The main home has been perfectly positioned on an elevated north-east facing site on the property, inviting in gentle breezes, abundant light, and showcasing a delightful verdant view across the grounds. Complete with four bedrooms, two bathrooms, separate living areas, large central kitchen, covered alfresco entertaining and double lock up garage - it is a generous sized, stylish home with offering easy-care family-friendly living.

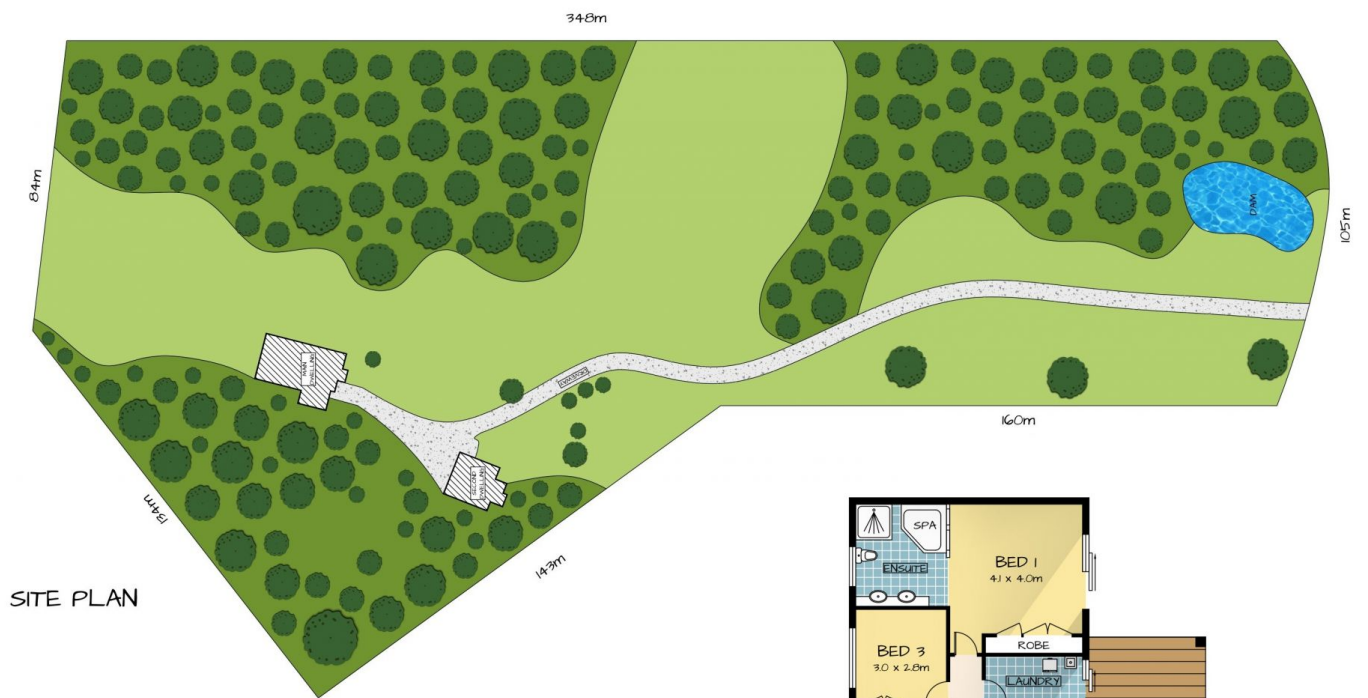
[For full version visit the website](https://www.amberwerchon.com.au)

Type : House
Price : \$1,050,000
Land Size : 44100 sqm
View : <https://www.amberwerchon.com.au/5340192>

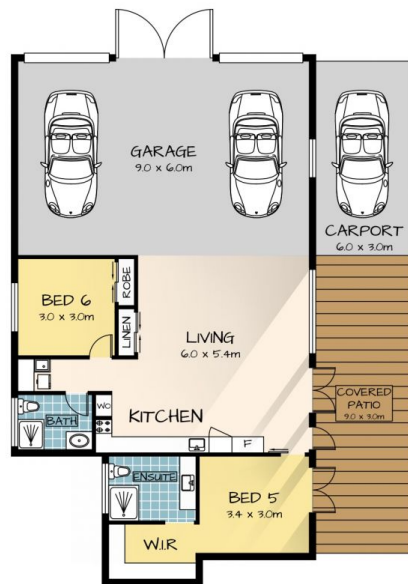


Amber Werchon
07 5430 0888

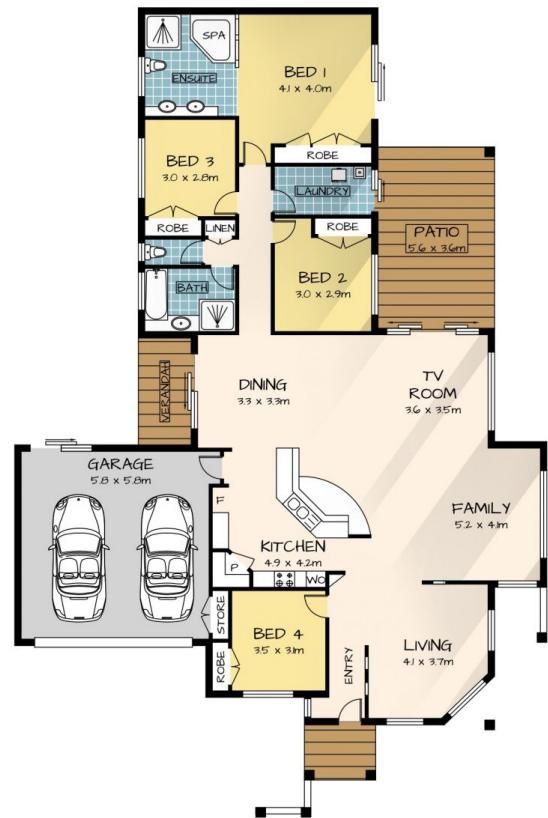
<https://www.amberwerchon.com.au>



SITE PLAN



SECOND DWELLING



MAIN RESIDENCE