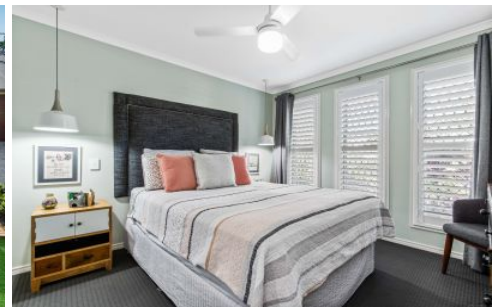


# AMBER WERCHON

PROPERTY · PEOPLE



## 3 Sage Close Mountain Creek QLD

3  2  2 

Amber Werchon Property presents to the market, 3 Sage Close, Mountain Creek. Relaxed family living awaits in this beautiful home located within the vibrant Brightwater community. Parks, schools and shops are all just steps away, while an abundance of space and privacy are all yours in this contemporary abode.

The layout offers three bedrooms and two bathrooms, plus multiple living areas including a separate media room and a family room. The designer kitchen, with gas cooking, a dishwasher and breakfast bar, overlooks the dining area and is ready for family mealtime.

Built-in robes are on offer in the two guest bedrooms, while the master has a walk-in robe and an ensuite. There is

[For full version visit the website](https://www.amberwerchon.com.au/5364917)

**Type** : House  
**Price** : \$575,000  
**Land Size** : 500 sqm  
**View** : <https://www.amberwerchon.com.au/5364917>



**Rudi du Preez**  
07 5430 0888

<https://www.amberwerchon.com.au>



# Amber Werchan



FLOOR PLAN ON SITE

This floor plan including furniture, fixture measurements and dimensions are approximate and for illustrative purposes only. Boxbrownie.com gives no guarantee, warranty or representation as to the accuracy and layout. All enquiries must be directed to the agent, vendor or party representing this floor plan.

TOTAL : 202.9m<sup>2</sup>

3 Sage Close Mountain Creek