

AMBER WERCHON

PROPERTY · PEOPLE



34 Mountain Ash Drive Mountain Creek QLD

4 2 2

Amber Werchon Property presents to the market 34 Mountain Ash Drive, Mountain Creek. This solid brick and tile home is ideal for a large family looking for more space in an established area of the coast.

Featuring four bedrooms, two bathrooms, double garage, second lounge area, air conditioning and ceiling fans, side access, inground pool, ample storage, solar panels, two sheds and a separate laundry, there is nothing to do here except move in and enjoy!

Styled with cool coastal colours, the kitchen is the heart of the home with a large peninsula and bench overhang to allow for seating, and more than enough space to prepare a three course meal for twelve guests! You can even stand

[For full version visit the website](https://www.amberwerchon.com.au)

Type : House
Price : \$615,000
Building Size : 214 sqm
Land Size : 651 sqm
View : <https://www.amberwerchon.com.au/5535620>

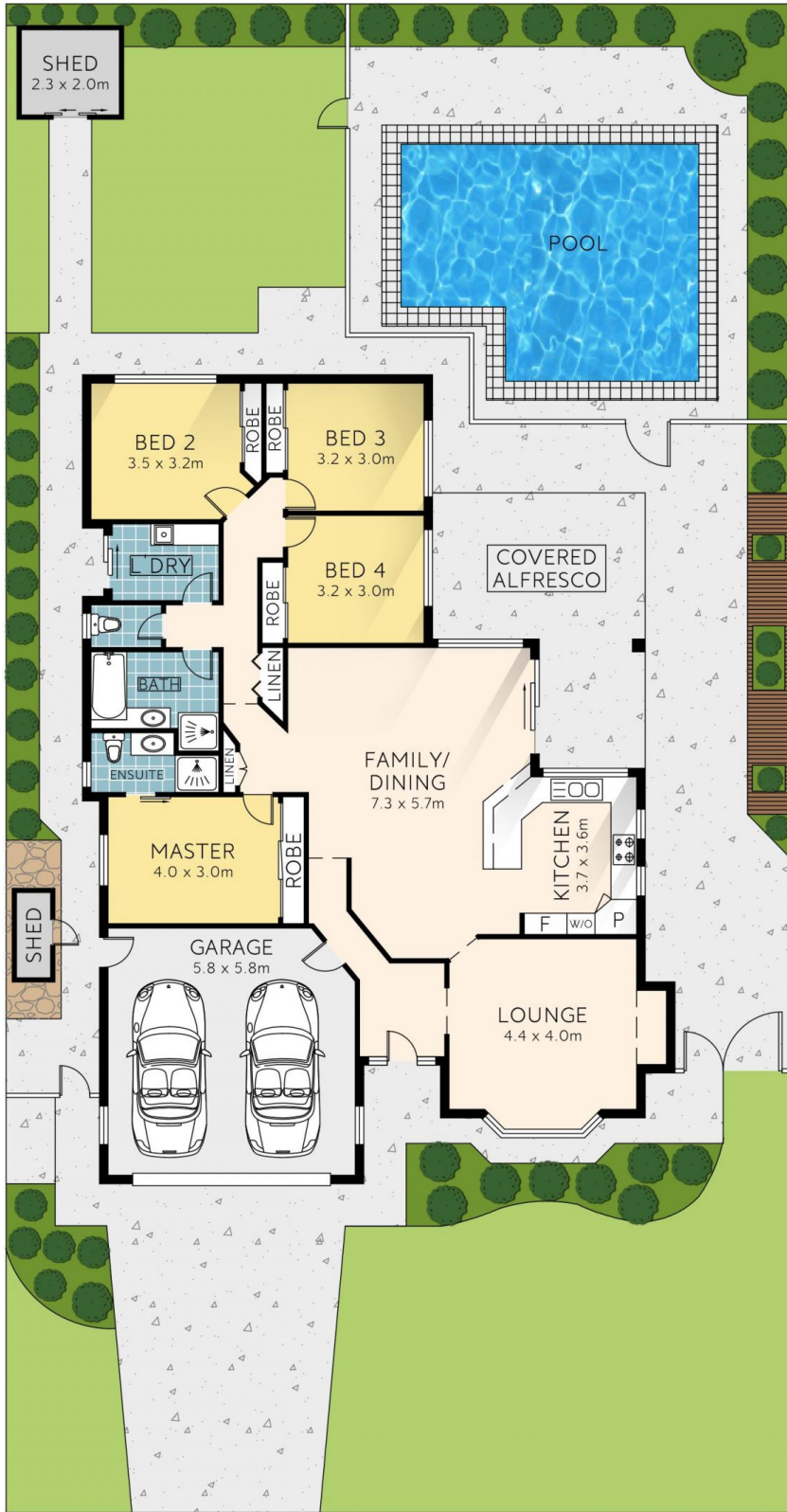


Frenchy Devos
07 5430 0888



Daniel Mendes
07 5430 0888

<https://www.amberwerchon.com.au>



(Floor Plan For Illustrative Purposes Only)

Scale In metres. We give no guarantee, warranty or representation as to the accuracy and completeness of the floor plan. We recommend that you instruct your own surveyor to carry out an independent investigation of the property prior to relying on the accuracy and completeness of this plan. Floor Plan presented by The Floor Plan Specialist. www.thefloorplanspecialist.com.au © Copyright. This drawing remains the property of The Floor Plan Specialist and may not be used or reproduced in whole or in part without written permission.

APPROXIMATE AREAS	
INTERNAL :	150 m ²
EXTERNAL :	25 m ²
GARAGE :	33 m ²
SHED :	6 m ²
TOTAL AREA :	214 m ²
LAND TOTAL :	651 m ²



34 Mountain Ash Drive, Mountain Creek