

AMBER WERCHON

PROPERTY · PEOPLE



21 Gympie South Street Landsborough QLD

3  1  2 

Amber Werchon Property presents to the market 21 Gympie Street South, Landsborough. A wonderful entry-level family home, or investment opportunity for the savvy investor, located in the Sunshine Coast Hinterland town of Landsborough.

Positioned less than 10 minutes' walk to the centre of town, the local primary school and Landsborough train station (direct Brisbane City line), and 15-20 minutes' drive to the Sunshine Coast's stunning beaches. This property is a must-see!

The photos cannot fully show what's on offer here - only an inspection will reveal the true value that this property holds. Built on a flat, sunny quarter-of-an-acre block, with room for

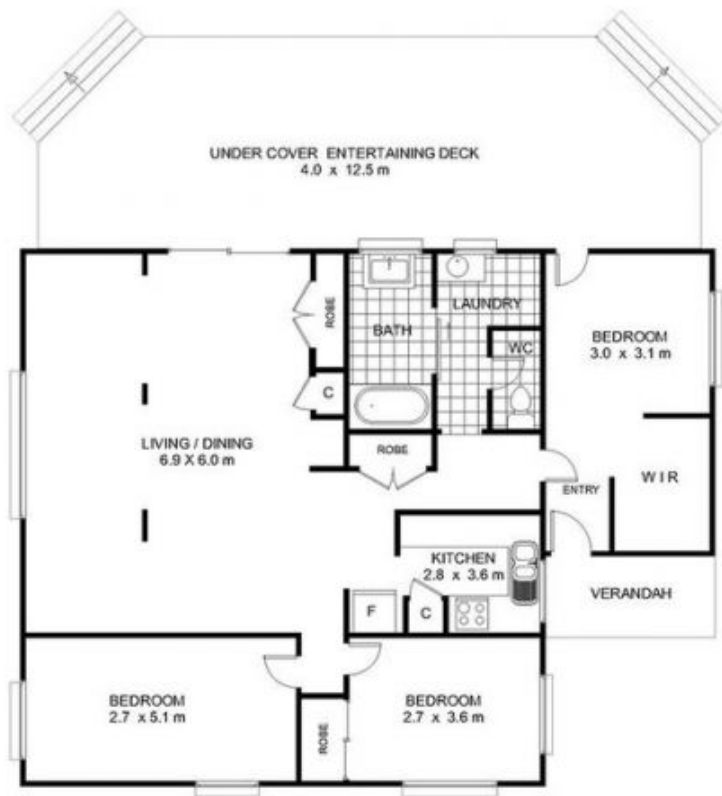
[For full version visit the website](https://www.amberwerchon.com.au/600874)

Type : House
Price : \$435,000
Land Size : 1012 sqm
View : <https://www.amberwerchon.com.au/600874>
5



Rudi du Preez
07 5430 0888

<https://www.amberwerchon.com.au>



NOT IN POSITION TO DWELLING



21 GYMPIE STREET SOUTH, LANDSBOROUGH TOTAL APPROX AREA: 198 m²

Whilst every attempt has been made to ensure the accuracy of the floor plan contained here, measurements of doors, windows, rooms and any other items are approximate and no responsibility is taken for any error, omission, or mis-statement. This plan is for illustrative purposes only and should be used as such by any prospective purchaser. The services, systems and appliances shown have not been tested and no guarantee as to their operability or efficiency can be given.