

# AMBER WERCHON

PROPERTY · PEOPLE



## 245 Mons School Road Buderim QLD

4 3 2

This Queenslander, circa 1940 was relocated and modernised just 10 years ago. This classic home is positioned on a beautifully landscaped 784m2 block backing onto native bushland offers well-designed family friendly living across two levels, plus expansive alfresco entertaining for all occasions.

The upper storey/entry level is complete with an elegant master retreat with dressing room and ensuite ; a formal lounge with a decorative featured ceiling, formal dining room, office area, stylish granite kitchen, second bedroom and a main bathroom with bath. The large verandah which flows from the kitchen is covered with a view overlooking the in-ground pool and silver gum trees for a lovely backdrop.

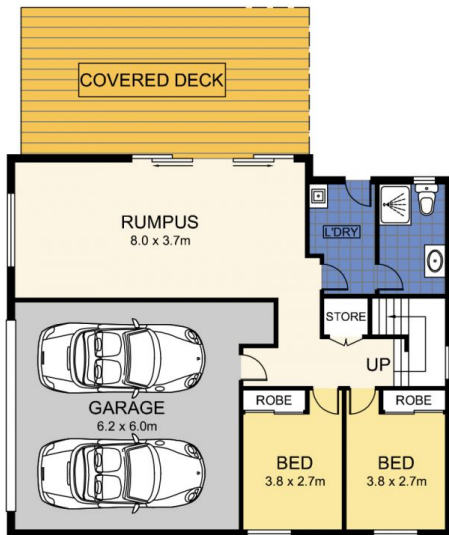
[For full version visit the website](https://www.amberwerchon.com.au/6736385)

**Type** : House  
**Price** : Contact Agent  
**Land Size** : 784 sqm  
**View** : <https://www.amberwerchon.com.au/6736385>



**Rudi du Preez**  
07 5430 0888

<https://www.amberwerchon.com.au>



**LOWER LEVEL**



**ENTRY LEVEL**



**(Floor Plan For Illustrative Purposes Only)**

Scale In metres. We give no guarantee, warranty or representation as to the accuracy and completeness of the floor plan. We recommend that you instruct your own surveyor to carry out an independent investigation of the property prior to relying on the accuracy and completeness of this plan. Floor Plan presented by The Floor Plan Specialist. [www.thefloorplanspecialist.com.au](http://www.thefloorplanspecialist.com.au)

**APPROXIMATE AREAS**

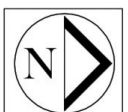
INTERNAL : 199 m<sup>2</sup>

EXTERNAL : 76 m<sup>2</sup>

GARAGE : 39 m<sup>2</sup>

**TOTAL AREA : 314 m<sup>2</sup>**

**LAND TOTAL : 784 m<sup>2</sup>**



**245 Mons School Road, Buderim**