

AMBER WERCHON

PROPERTY · PEOPLE



101/1 Poinsettia Court Mooloolaba QLD

3 2 2

Amber Werchon Property presents to the market, 101/1 Poinsettia Court, Mooloolaba: this architect-designed tri-level townhouse within the leafy Emerald Springs residential community, offering effortless living and a desirable lifestyle just minutes to stunning patrolled beaches, boutique dining, and more?

Across three levels, the home comprises three bedrooms, two bathrooms plus a third toilet, open plan living and dining flowing out to a covered balcony, modern kitchen, private elevated north-east facing patio and courtyard, separate laundry, and double lock up garage with extra storage. There is also space under the balcony to park a third vehicle and solar to help with those rising electricity bills.

Presentation is impeccable; recently renovated throughout,

Price : Offers in the high \$800,00s considered
Building Size : 222 sqm
View : <https://www.amberwerchon.com.au/8018058>

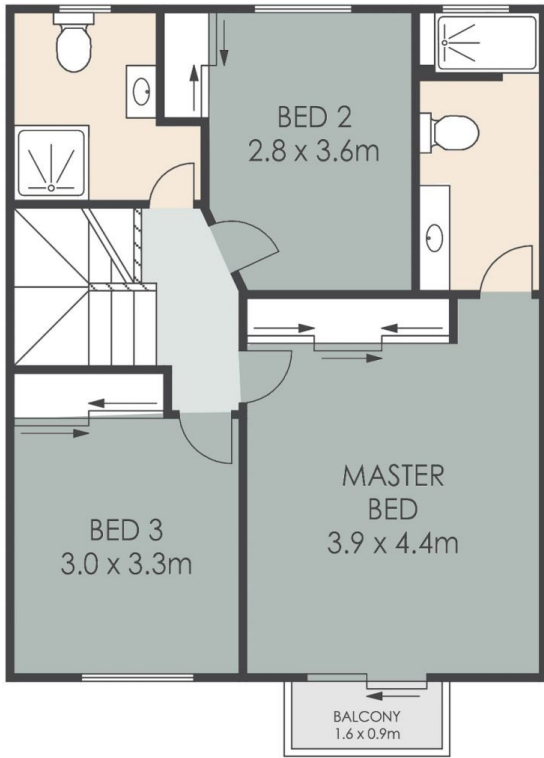


Terri-Anne Murray
07 5430 0888

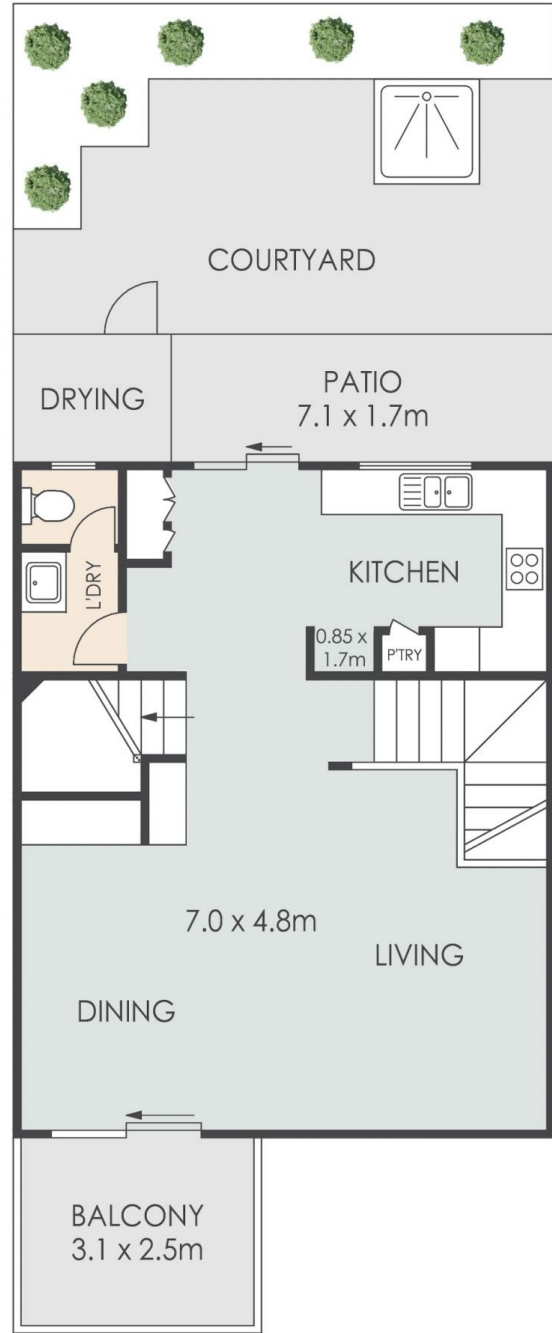


Marni Sweedman
07 5430 0888

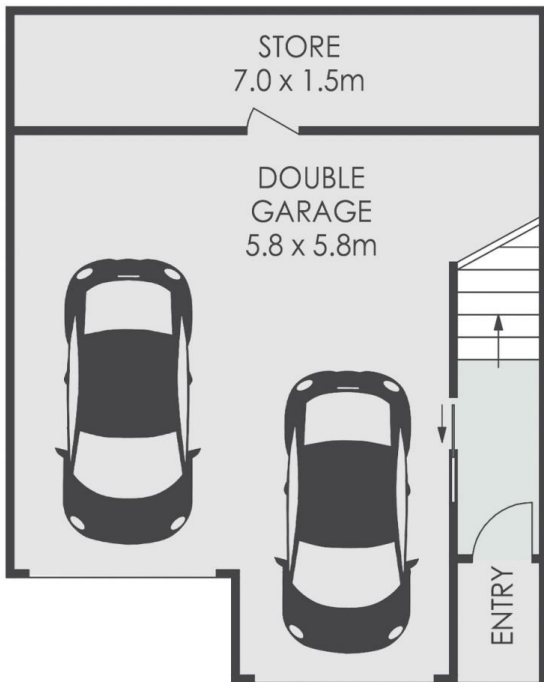
<https://www.amberwerchon.com.au>



UPPER LEVEL



MIDDLE LEVEL



GROUND LEVEL

- 3 
- 3 
- 2 

101/1 Poinsettia Court, MOOLOOLABA

INTERNAL: 177m² EXTERNAL: 45m² TOTAL: 222m²

ARTIST'S IMPRESSION ONLY: While every attempt has been made to ensure the accuracy of this floor plan's areas and measurements of doors, windows, rooms and all other items are approximate and no responsibility is taken for any error, omission, or mis-statement. This plan is for illustrative purposes only and should only be used as such by any prospective purchaser www.fratterphoto.com

