

AMBER WERCHON

PROPERTY · PEOPLE



43/16 Toral Drive Buderim QLD

3 2 2

Amber Werchon Property invites you to step into the heart of Toral Drive, Buderim, and experience a lifestyle filled with warmth, fun, and community spirit. Nestled within the friendly Stringybark Place Complex, this modern townhouse is a fantastic opportunity for first-time homeowners, savvy investors, and families looking to make memories in a vibrant neighbourhood.

Spanning two levels and 154 square meters, this townhouse is all about easy living. The open-plan layout seamlessly connects a contemporary kitchen, lounge, and dining area, creating a space perfect for relaxed gatherings with loved ones. Whip up a storm in the kitchen, complete with stylish stone benchtops, while upstairs, three bedrooms offer cosy retreats for everyone in the family. Plus, there's a versatile landing area upstairs-ideal for a study nook or playroom.

Price : Contact Agent

View : <https://www.amberwerchon.com.au/8037638>



Rachael Allen
07 5430 0888



Teale Ring
07 5430 0888

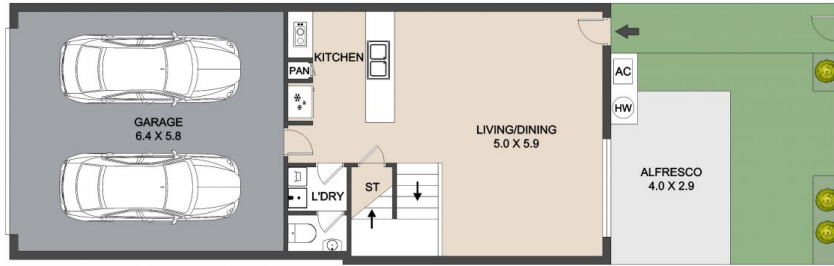
<https://www.amberwerchon.com.au>

AMBER WERCHON

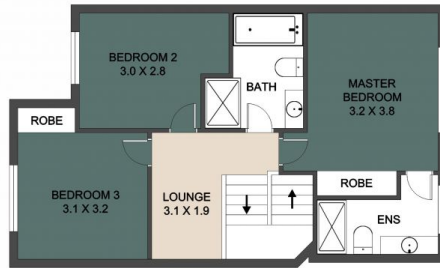
PROPERTY · PEOPLE



GROUND FLOOR



FIRST FLOOR



ARTIST'S IMPRESSION ONLY: Every effort has been taken to ensure the accuracy of this floor plan's measurements and areas; however, measurements are approximate, and no responsibility is taken for any error or misrepresentation made by the artist. No guarantee is offered, and the use of this floor plan is for illustrative purposes only.

46/16 Toral Drive, Buderim

TOTAL - 154 SQM