

AMBER WERCHON

PROPERTY · PEOPLE



43/1 Grenada Way Kawana Island QLD

2 2 2

Amber Werchon Property presents to the market, 43/1 Grenada Way, Kawana Island: this light-filled dual-level townhouse, in the well-located Leeward complex in the heart of Kawana Island opposite Double Bay Park and man-made beach, offers the ultimate Island lifestyle along with virtually endless sunshine and good times.

A well-designed floor plan places both bedrooms on the upper level each with their own exclusive balcony along with ensuite and main bathroom; the ground floor comprises expansive open plan living and dining with a north facing and south facing balcony at each end, premium upgraded kitchen with high-end Miele appliances, study nook, separate laundry, and third toilet. There is also secure basement (side-by-side) parking for two vehicles,

Type	: Townhouse
Price	: \$885,000
Building Size	: 220 sqm
View	: https://www.amberwerchon.com.au/8049814



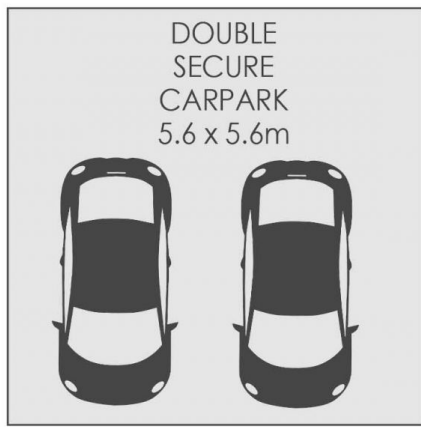
Terri-Anne Murray
07 5430 0888



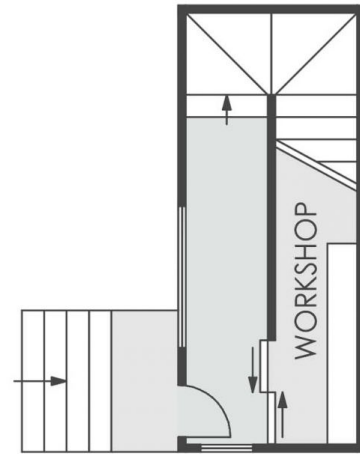
Todd Forrest
07 5430 0888

[For full version visit the website](https://www.amberwerchon.com.au)

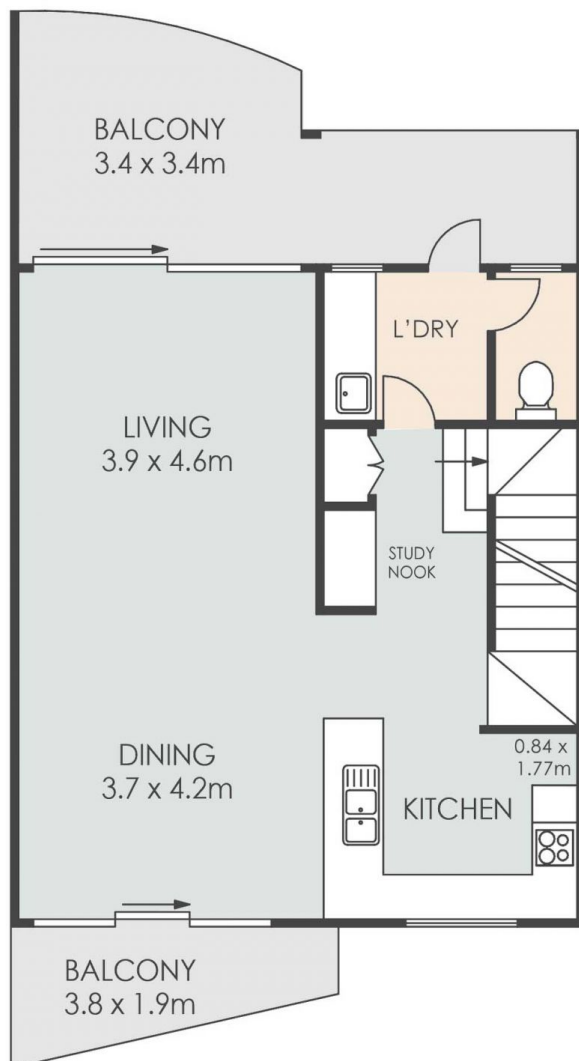
<https://www.amberwerchon.com.au>



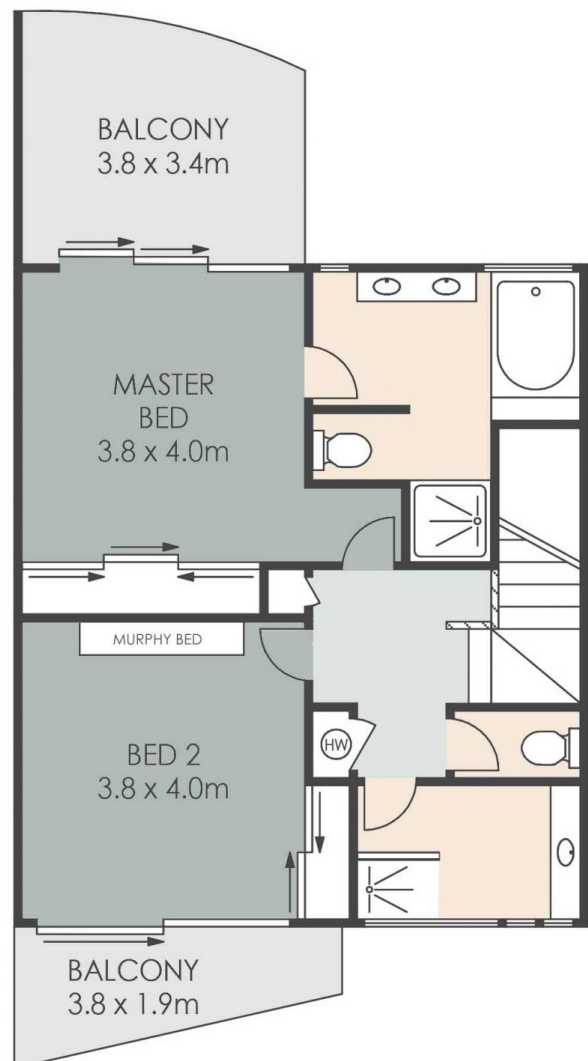
LOWER LEVEL



ENTRY LEVEL



LEVEL ONE



LEVEL TWO



43/1 Grenada Way PARREARRA

INTERNAL: 144m² EXTERNAL: 76m² TOTAL: 220m²

ARTIST'S IMPRESSION ONLY: While every attempt has been made to ensure the accuracy of this floor plan's areas and measurements of doors, windows, rooms and all other items are approximate and no responsibility is taken for any error, omission, or mis-statement. This plan is for illustrative purposes only and should only be used as such by any prospective purchaser www.fratterphoto.com

