

AMBER WERCHON

PROPERTY · PEOPLE



40 Tarawa Street Kawana Island QLD

4  2  2 

Amber Werchon Property presents to the market, 40 Tawara Street, Parrearra: this expansive family home on a generous sized fully fenced 760m2 corner block offers all the benefits of Island living with quick easy access on foot to parks, playgrounds, waterways, dining, Double Bay, and kilometres of pedestrian pathways providing connectivity all the way through to Mooloolaba.

Across a single level, approximately 314m2 in total, the home comprises elegant formal entry, four bedrooms, two bathrooms, three separate living areas, central kitchen, north facing covered alfresco patio, separate laundry with external access, and double lock up garage, plus extra parking space on driveway for additional vehicles.

Ducted air-conditioning, ceiling fans, easy-care tiled flooring in majority of living spaces, granite benches in

Price : New to Market
Building Size : 244 sqm
Land Size : 760 sqm
View : <https://www.amberwerchon.com.au/8053655>

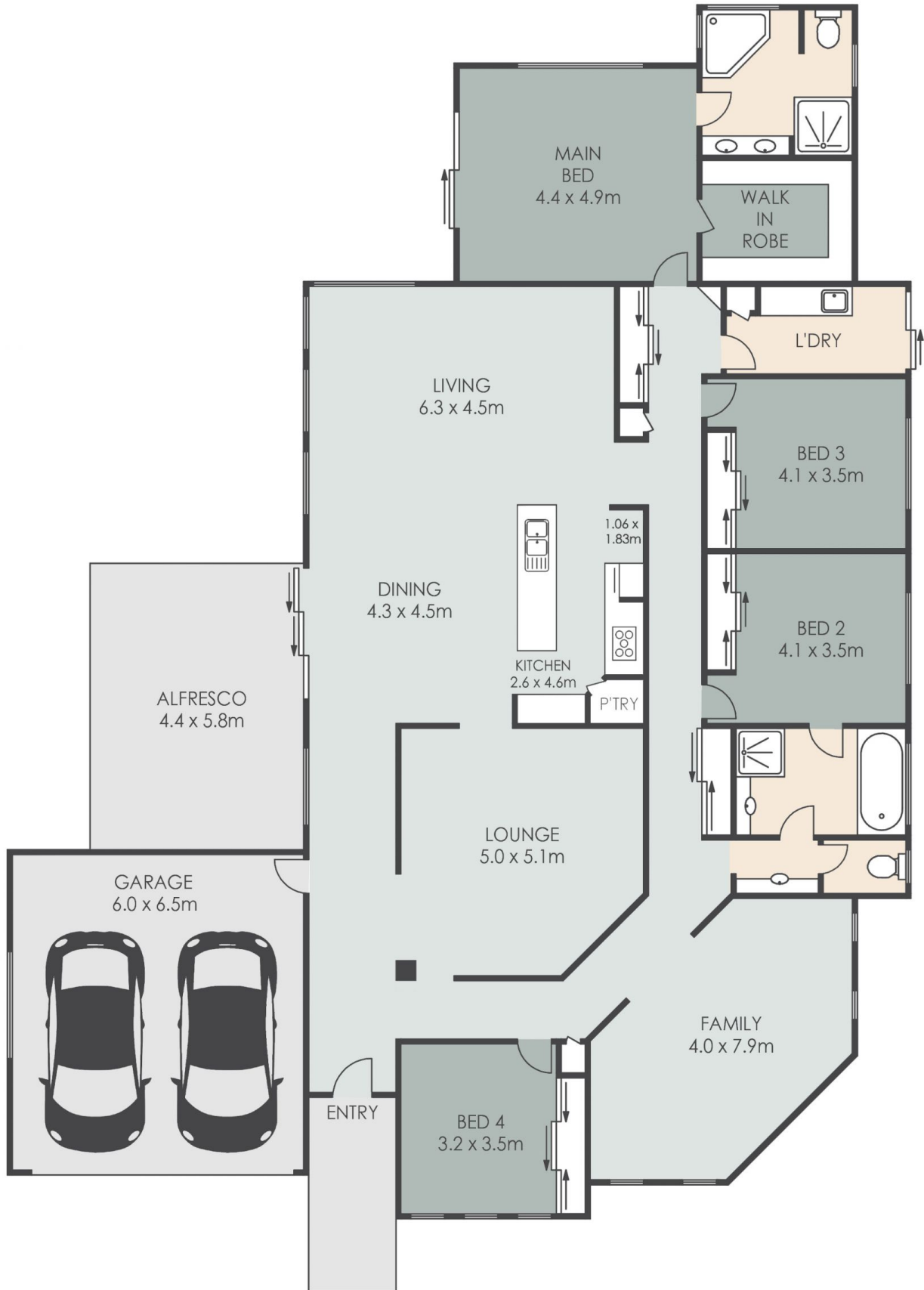



Terri-Anne Murray
07 5430 0888



Todd Forrest
07 5430 0888

<https://www.amberwerchon.com.au>



- 4 
- 2 
- 2 



40 Tarawa Street, PARREARRA

INTERNAL: 282m² EXTERNAL: 32m² TOTAL: 314m²

ARTIST'S IMPRESSION ONLY: While every attempt has been made to ensure the accuracy of this floor plan's areas and measurements of doors, windows, rooms and all other items are approximate and no responsibility is taken for any error, omission, or mis-statement. This plan is for illustrative purposes only and should only be used as such by any prospective purchaser www.fratterphoto.com

