

# AMBER WERCHON

PROPERTY · PEOPLE



## 9 Louise Lane Nambour QLD

3 2 3

Amber Werchon Property Presents to market; 9 Louise Lane, Nambour. A hidden gem tucked away at the end of a tranquil lane, this ultra-stylish residence offers easy access to all of life's modern conveniences, whilst offering an ambience and lifestyle that feels like you're miles from town.

From the decadent master suite to the polished concrete flooring and sensor lighting, you'll experience the unexpected wow factor as soon as you walk in the door.

The heart of the home is the kitchen, which has been designed by a professional chef, and includes high-end Bosch appliances, 40mm stone benchtops, and an induction cooktop integrated into the oversized island bench.

**Price** : Contact Agent  
**Building Size** : 245 sqm  
**Land Size** : 4211 sqm  
**View** : <https://www.amberwerchon.com.au/8077648>



**Lucy Werchon**  
07 5430 0888



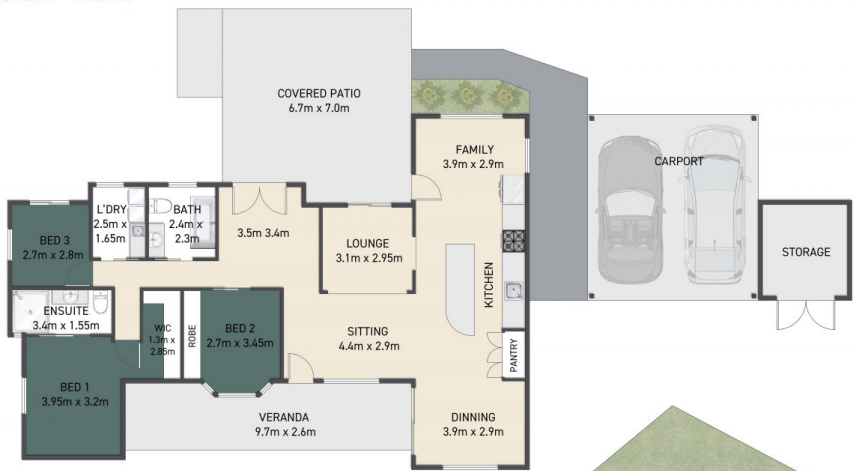
**Naj Elsayed**  
07 5430 0888

<https://www.amberwerchon.com.au>



# AMBER WERCHON

PROPERTY · PEOPLE



FLOOR PLAN



SITE PLAN

## 9 Louise Lane, Nambour

This floor plan including furniture, fixture measurements and dimensions are approximate and for illustrative purposes only.  
BoxBrownie.com gives no guarantee, warranty or representation as to the accuracy and layout.  
All enquiries must be directed to the agent, vendor or party representing this floor plan.