

AMBER WERCHON

PROPERTY · PEOPLE



96 Vise Road Buderim QLD

4 2 3

Amber Werchon presents to the market this wonderful large family retreat purposely designed to embrace its secluded position on a picturesque 6010sqm parcel only minutes to Buderim village.

Price : Contact Agent

View : <https://www.amberwerchon.com.au/8083006>

Private and elevated with generous proportions delivering relaxed in/outdoor family living in an idyllic and tranquil garden setting, it is a private family entertainer with a delightful treed backdrop - Relaxed spacious living opens to lovely sheltered alfresco deck - Central gas kitchen with dining bar, walk in pantry and dishwasher - Oversized air conditioned master to the lower level with robe and ensuite - Designated office on ground floor with garden outlooks -



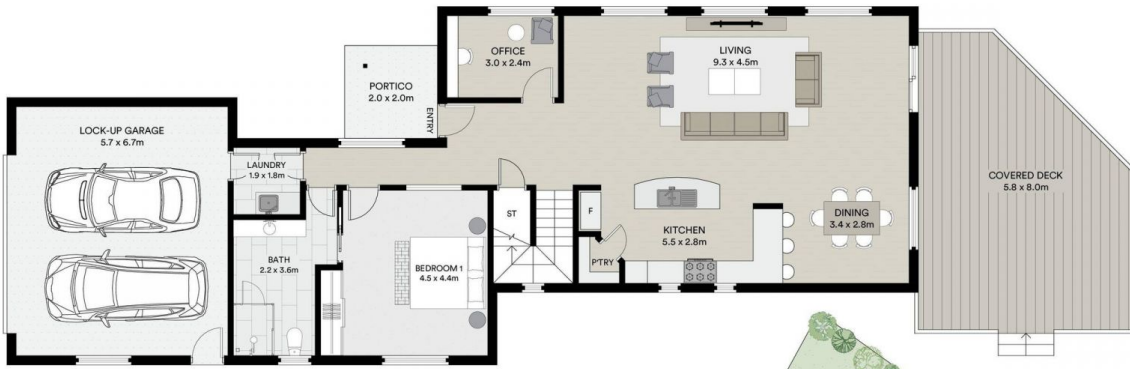
Dan Lal
07 5430 0888



Kerry-Anne Crowley
07 5430 0888

With a further three carpeted bedrooms all with split system air con - Good sized family TV room on the upper level - Fully fenced with separate vehicle shed and secondary

<https://www.amberwerchon.com.au>



GROUND FLOOR



FIRST FLOOR



WISE ROAD



INTERNAL AREA : 209 M²
 GARAGE : 38 M²
 PORTICO / DECK : 43 M²
 TOTAL AREA : 290 M²

All information contained in this document is from sources we believe to be accurate, however we cannot guarantee its accuracy. Interested persons should make and rely on their own enquiries in relation to measurements, dimensions, layout, furniture and descriptions.