

AMBER WERCHON

PROPERTY · PEOPLE



1/157 Mooloolaba Road Buderim QLD

3 2 2

Amber Werchon Property presents to the market, 1/157 Mooloolaba Road, Buderim: HOUSE IS EMPTY AND READY TO MOVE IN - 14 DAY SETTLEMENT IF YOU PREFER - this ultra-private stand-alone house-sized duplex tucked away at the rear the block; framed by lush, leafy gardens offers easy-care living on top of the mountain just a short walk to bus stops, local shops, and Wirreanda Park with its majestic figs.

Comprising three generous sized bedrooms, two bathrooms, expansive open plan living with seamless integrate indoor/outdoor flow to north facing covered patio, well-equipped central kitchen, separate laundry with storage, and double lock-up garage; it is an ideal size and design for a single/couple or small family.

Type : Semi Detached

Price : Contact Agent

View : <https://www.amberwerchon.com.au/8085921>



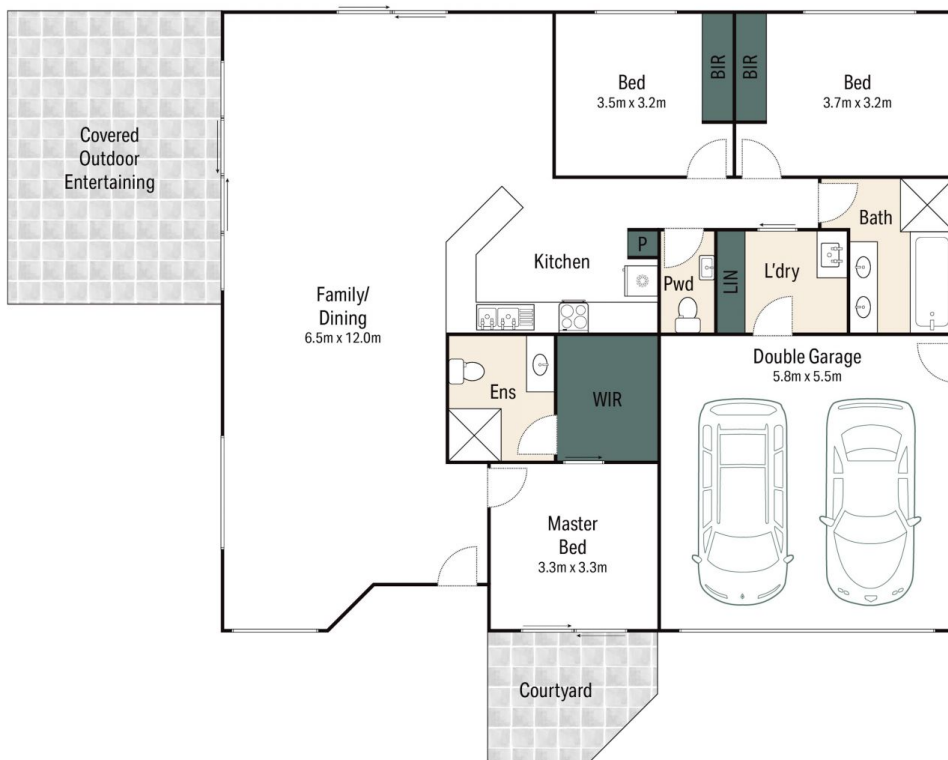
Dan Lal
07 5430 0888



Fabiana Papahatzis
07 5430 0888

[For full version visit the website](https://www.amberwerchon.com.au)

<https://www.amberwerchon.com.au>



-  3
-  2
-  2

1/157 Mooloolaba Road, Buderim

Whilst bwrm.com.au has made every attempt to ensure the accuracy of the floor plan contained here, measurements are approximate and no responsibility is taken for any error, omission, or mis-statement. This plan is for illustrative purposes only.

INTERNAL : 175m²

AW