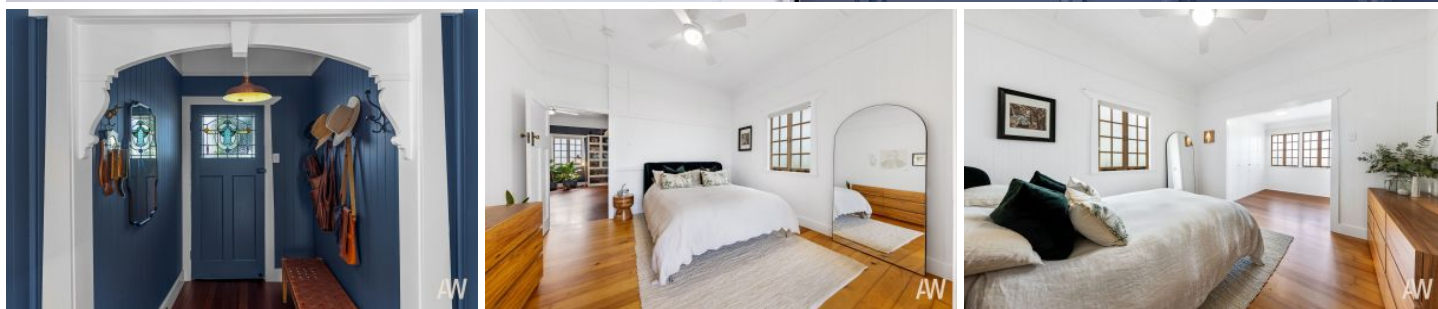


AMBER WERCHON

PROPERTY · PEOPLE



245 Mons School Road Buderim QLD

4 3 2

Amber Werchon Property presents to the market, 245 Mons School Road, Buderim: this impeccably presented, comprehensively renovated dual level Queenslander, circa 1940, on a 784m² block backing directly onto leafy bushland, offering expansive family-friendly combining all the modern comforts with old-world charm and grace.

Across two light-filled levels the residence comprises four bedrooms, three elegant bathrooms, well-appointed central kitchen, separate living areas - casual and formal, upper and lower timber decks overlooking sundrenched inground pool and adjoining forest, separate laundry, and double lockup garage.

The floor plan facilitates excellent separation of living and could be converted (with the addition of a kitchenette) to genuine dual living for the extended family; or explore other

Price : Contact Agent
Land Size : 784 sqm
View : <https://www.amberwerchon.com.au/8087786>



Rudi du Preez
07 5430 0888

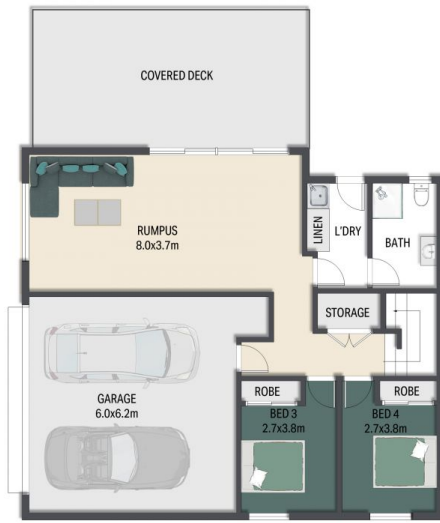


Candice du Preez
07 5430 0888

<https://www.amberwerchon.com.au>

AMBER WERCHON

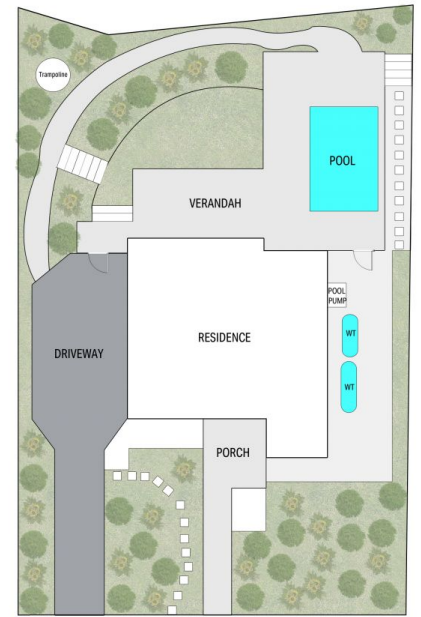
PROPERTY · PEOPLE



GROUND FLOOR PLAN



UPPER FLOOR PLAN



Mons School Road
SITE PLAN

Internal : 199m²
 External : 76m²
 Garage : 39m²
 Approx total area : 314m²
 Land : 784m²

This floor plan including furniture, fixture measurements and dimensions are approximate and for illustrative purposes only. BoxBrownie.com gives no guarantee, warranty or representation as to the accuracy and layout. All enquiries must be directed to the agent, vendor or party representing this floor plan.

245 Mons School Road, Buderim