

AMBER WERCHON

PROPERTY · PEOPLE



133 Nathan Street Brighton QLD

4 2 4

Amber Werchon Property presents to the market, 133 Nathan Street, Brighton: this solidly built double storey brick and tile classic, circa 1981, on a huge parklike 3720m2 block with potential to subdivide (subject to council approval) is being offered the market for the very first time since built - providing an outstanding renovation and development opportunity!

The home itself offers supersized family living across two levels comprising formal entry foyer, four bedrooms, two bathrooms, multiple living areas, original kitchen plus kitchenette, large laundry, double lock-up garage and covered alfresco entertaining at rear.

If you are a retro-aficionado you are going to adore this -

[For full version visit the website](https://www.amberwerchon.com.au)

Type : House
Price : Contact Agent
Land Size : 3708 sqm
View : <https://www.amberwerchon.com.au/8088886>

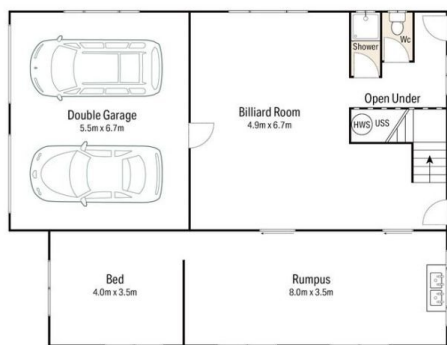


Dan Lal
07 5430 0888



Kerry-Anne Crowley
07 5430 0888

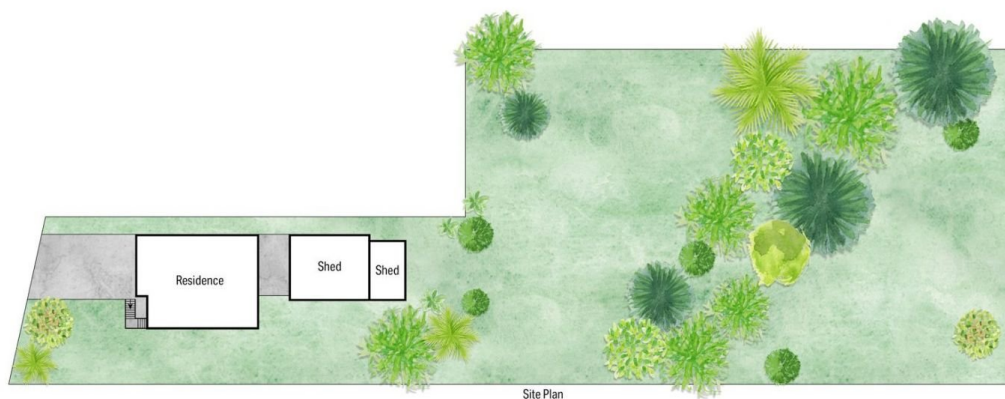
<https://www.amberwerchon.com.au>




Ground Floor



First Floor



Site Plan

-  3
-  2
-  2

133 Nathan Street, Brighton

Whilst bwr.com.au has made every attempt to ensure the accuracy of the floor plan contained here, measurements are approximate and no responsibility is taken for any error, omission, or mis-statement. This plan is for illustrative purposes only.



INTERNAL : 270m²

LAND : 3708m²

AW