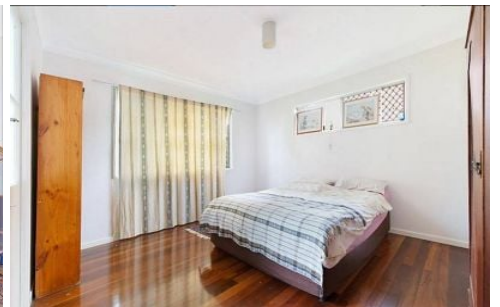


AMBER WERCHON

PROPERTY · PEOPLE



3 Mary Street Palmwoods QLD

2 1 1

Amber Werchon Property is delighted to present this charming 1960s worker's cottage, an ideal opportunity for astute investors looking to capitalize on a property brimming with potential.

Situated just behind the well-known Rick's Garage, this inviting 2-bedroom home sits on a 637m² block zoned for medium density. The open-plan living area, polished timber floors, and bright, neutral décor create a warm and welcoming environment.

The property is perfectly positioned in the vibrant railway town of Palmwoods, within easy walking distance to the local bus and train stations, a diverse selection of eateries and coffee shops, and essential community amenities like

[For full version visit the website](https://www.amberwerchon.com.au)

Type	: House
Price	: Contact Agent
Building Size	: 119 sqm
Land Size	: 637 sqm
View	: https://www.amberwerchon.com.au/8094623



Teale Ring
07 5430 0888



Rachael Allen
07 5430 0888

<https://www.amberwerchon.com.au>



3 MARY ST

PALMWOODS

INTERNAL AREA :- 101 SQM
 CAR ACCOM AREA :- 38 SQM
 EXTERNAL AREA :- 29 SQM
 TOTAL AREA :- 168 SQM

This floor plan is conceptual only. It is provided for illustrative purposes only and should not be relied upon. We make no guarantee as to the accuracy of this plan. All interested parties should make and rely on their own enquiries in all respects. The accuracy of the information contained in this floor plan.

