

AMBER WERCHON

PROPERTY · PEOPLE



9 Elsa Wilson Drive Buderim QLD

4 2 3

Amber Werchon Property presents to the market, 9 Elsa Wilson Drive, Buderim: this double storey family home on a fenced 800m2 block backing directly onto the Headland Golf Course, offers generous sized living across both levels with a versatile floor plan that can facilitate dual occupancy or work-from-home options.

Both levels are fully self-contained; and altogether the home comprises four bedrooms, two stylish modern bathrooms, powder room, two kitchens, three living areas, upper covered deck with delightful outlook across 13th hole and fairway, separate laundry, and double lock up garage.

Raked ceilings and hardwood timber floors in upper living and kitchen, floor to ceiling tiles and dual vanities in luxury

[For full version visit the website](https://www.amberwerchon.com.au)

Type : House
Price : \$1,500,000
Land Size : 800 sqm
View : <https://www.amberwerchon.com.au/809813>
3



Sally Hope
07 5430 0888

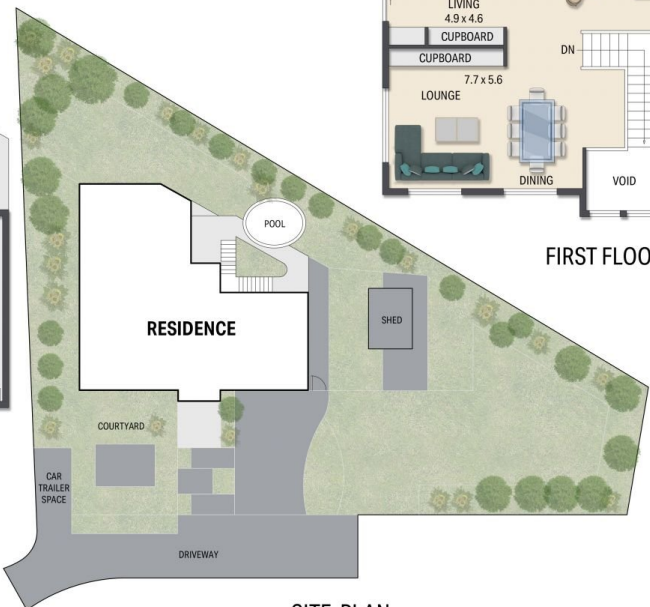


Rudi du Preez
07 5430 0888

<https://www.amberwerchon.com.au>



GROUND FLOOR PLAN



SITE PLAN



FIRST FLOOR PLAN

This floor plan including furniture, fixture measurements and dimensions are approximate and for illustrative purposes only. BoxBrownie.com gives no guarantee, warranty or representation as to the accuracy and layout. All enquiries must be directed to the agent, vendor or party representing this floor plan.

9 Elsa Wilson Drive, Buderim

INTERNAL:	232 m ²
GARAGE:	36 m ²
DECK:	35 m ²
TOTAL:	303 m ²