

AMBER WERCHON

PROPERTY · PEOPLE



6/21 The Esplanade Maroochydore QLD

2 2 2

Amber Werchon Property presents to the market, 6/21 The Esplanade, Maroochydore.

This stylish apartment, ideally located in the heart of Cotton Tree along Maroochydore's Esplanade, offers the ultimate coastal lifestyle with everything you need just steps away. Enjoy easy access to the river, beach, waterfront parks, playgrounds, boutique dining, retail spots, and the surf club—all just a short walk from your front door.

The home offers two spacious bedrooms, each with direct access to a balcony, and two stylish bathrooms. The ensuite features a spa bath and separate shower, while the main bathroom includes a shower over a full-sized bath. Comfort and convenience are enhanced with ducted air-conditioning, stone benchtops in the kitchen and bathrooms, and stainless steel appliances. Security screen

Price : Contact Agent
Land Size : 121 sqm
View : <https://www.amberwerchon.com.au/810448>
2



Steven du Preez
07 5430 0888

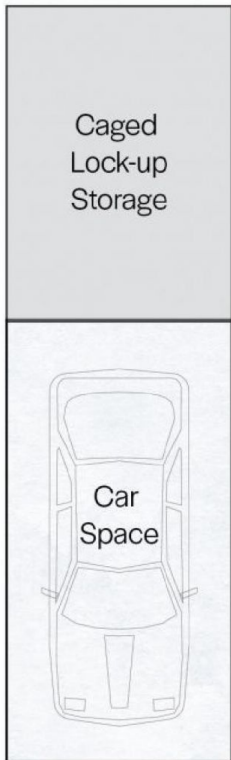
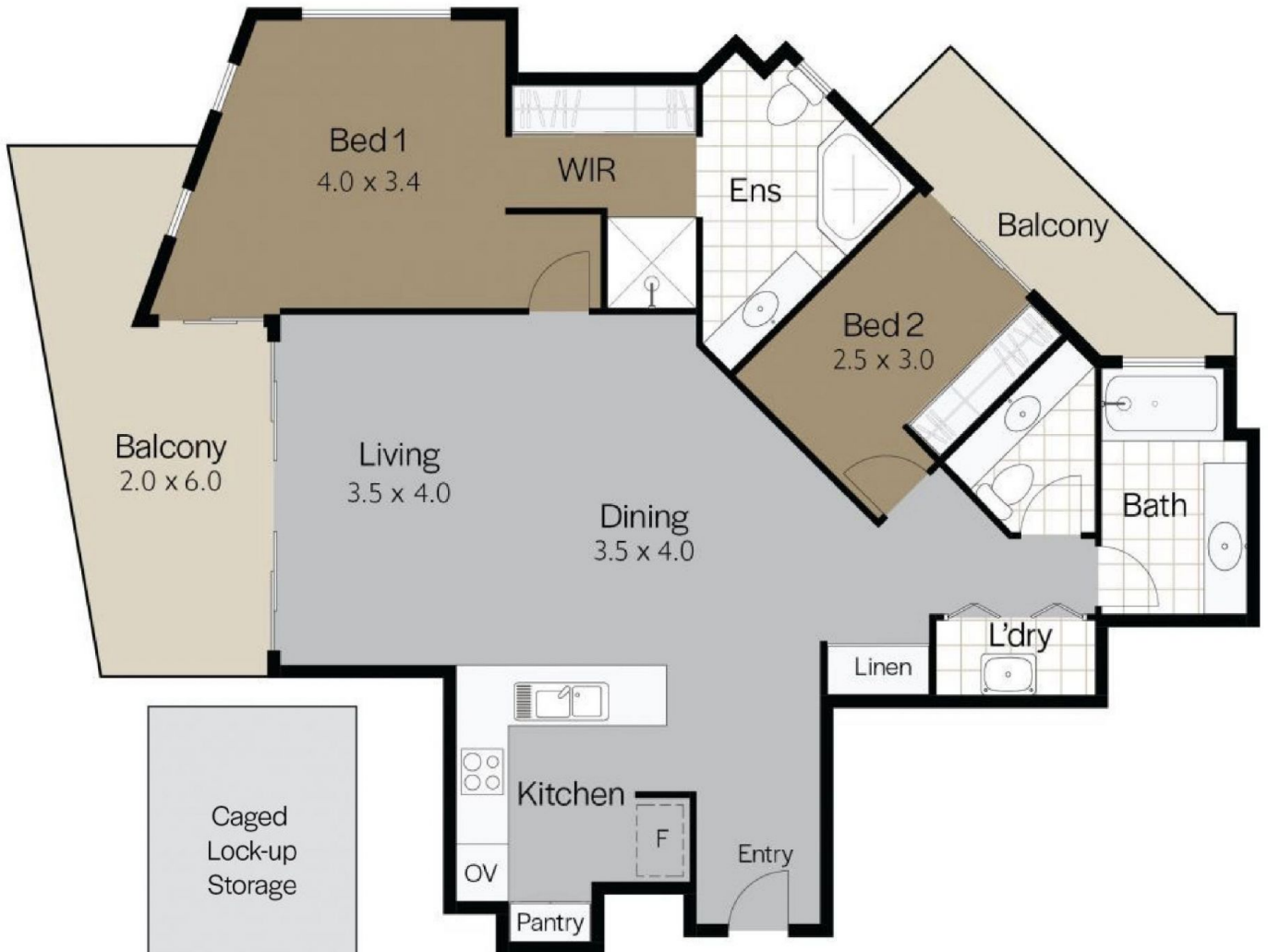


Amber Werchon
07 5430 0888

<https://www.amberwerchon.com.au>

AMBER WERCHON

PROPERTY · PEOPLE



(Not in place)

6/21 The Esplanade, Maroochydore

2 BED 2 BATH 1 CAR

TOTAL FLOOR AREA 106m²

Disclaimer: This floor plan is for illustrative purposes only. All measurements are approximate and intended as a guide. The accuracy of the floor plan cannot be guaranteed, and the layout may not reflect the property's exact dimensions or features. Buyers should rely on their own inspections and inquiries.