

# AMBER WERCHON

PROPERTY · PEOPLE



## 20 Lehmann Court Buderim QLD

4 3 2

Amber Werchon Property proudly presents to the market 20 Lehmann Court Buderim. Nestled within a tranquil cul de sac this home stands as an exemplar of Queensland living, where luxury meets family functionality. This majestic GJ Gardner two-storey residence, constructed with solid brick and tile, commands an elevated position overlooking the serene Buderim Meadows and rests on a generous 737 sqm parcel of land in a peaceful court.

Designed with family life in mind, the home offers four spacious bedrooms, potentially 5, three functional bathrooms, and a double garage, catering to the needs of families seeking space, comfort, and quality. The heart of this home is undoubtedly the tropical pool, offering panoramic views and an east-facing outdoor entertaining area, perfect for al fresco dining and leisurely weekend barbecues.

**Price** : Contact Agent  
**Building Size** : 224 sqm  
**Land Size** : 737 sqm  
**View** : <https://www.amberwerchon.com.au/8109023>



**Sally Hope**  
07 5430 0888

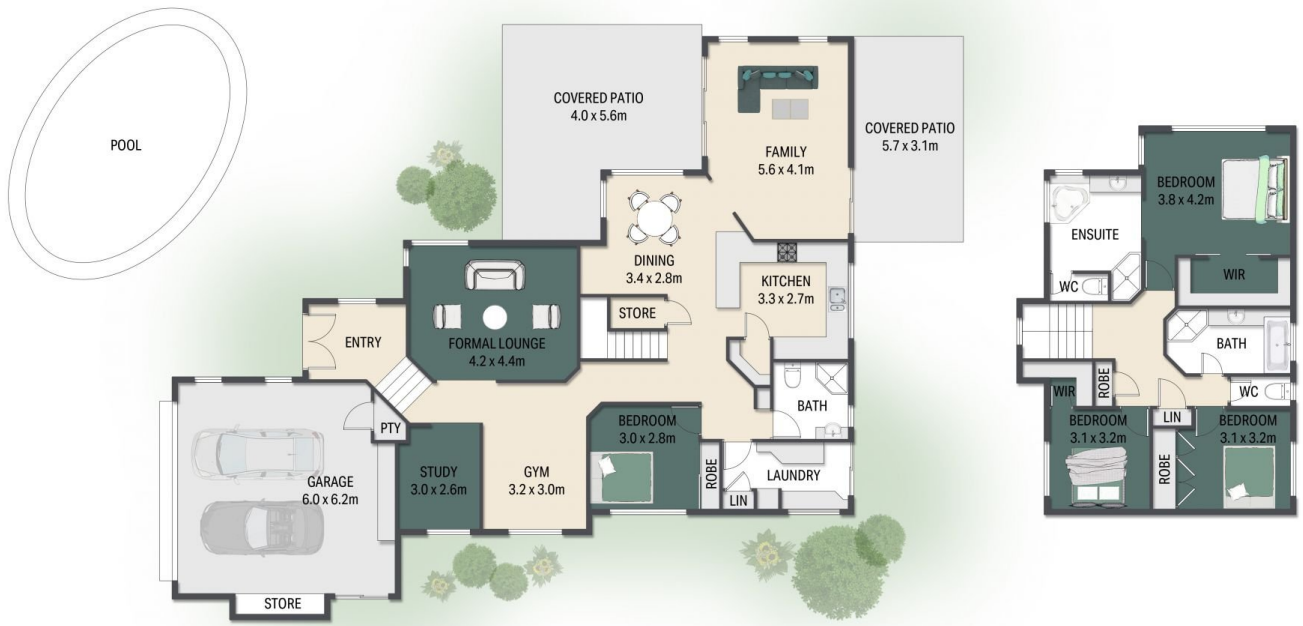


**Erin Carter**  
07 5430 0888

<https://www.amberwerchon.com.au>

# AMBER WERCHON

PROPERTY · PEOPLE



This floor plan including furniture, fixture measurements and dimensions are approximate and for illustrative purposes only. BoxBrownie.com gives no guarantee, warranty or representation as to the accuracy and layout. All enquiries must be directed to the agent, vendor or party representing this floor plan.

20 Lehmann Court Buderim