

# AMBER WERCHON

PROPERTY · PEOPLE



## 6 Rosella Place Nambour QLD

5 3 3

Amber Werchon Property is proud to present to you 6 Rosella Place. Introducing an impeccable jewel nestled in the serene heights of Nambour, a spectacular residence designed with family living in mind. This 5-bedroom, 3-bathroom abode is a testament to spacious elegance, boasting an exquisite dual living arrangement, including a self-contained granny flat with its own private access, ensuring comfort and privacy for extended family or guests.

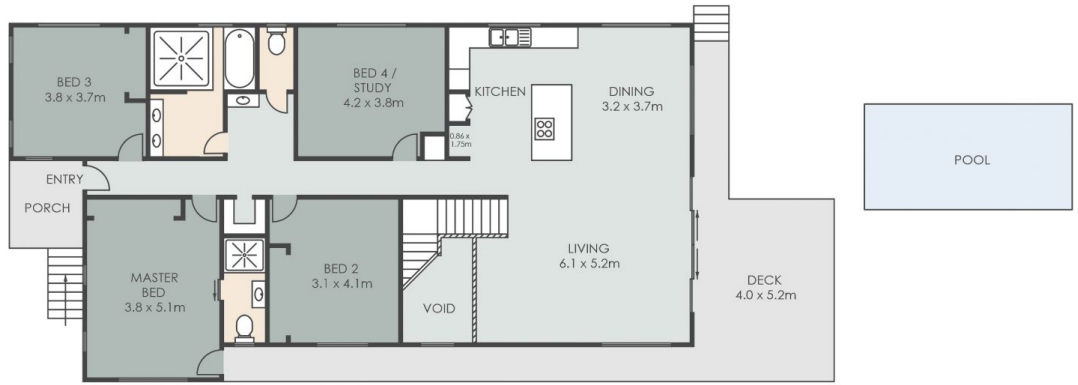
The heart of this home is its upper level, where the main living spaces reveal an open plan design that merges living and dining into an effortless flow, extending out onto a vast undercover deck. Here, uninterrupted views of the Blackall Range and the verdant Burnside slopes provide a breathtaking backdrop for entertainment or tranquil relaxation. The deck also leads access to a masterful infinity-style pool and a charming fire pit area, further

**Price** : Contact Agent  
**Land Size** : 1307 sqm  
**View** : <https://www.amberwerchon.com.au/8119219>

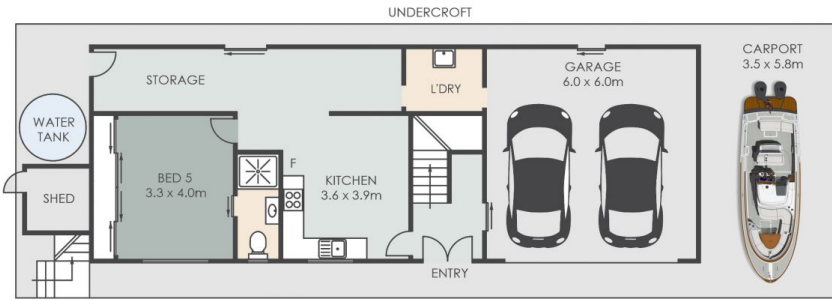


**Sue Curley**  
07 5430 0888

<https://www.amberwerchon.com.au>



UPPER LEVEL



LOWER LEVEL

- 5 
- 3 
- 3 



## 6 Rosella Place, NAMBOUR

INTERNAL: 273m<sup>2</sup> EXTERNAL: 113m<sup>2</sup> TOTAL: 386m<sup>2</sup>

ARTIST'S IMPRESSION ONLY: While every attempt has been made to ensure the accuracy of this floor plan's areas and measurements of doors, windows, rooms and all other items are approximate and no responsibility is taken for any error, omission, or mis-statement. This plan is for illustrative purposes only and should only be used as such by any prospective purchaser [www.fratterphoto.com](http://www.fratterphoto.com)

