

# AMBER WERCHON

PROPERTY · PEOPLE



## 13 Grenfell Court Kuluin QLD

4 3 4

Amber Werchon Property presents to the market, 13 Grenfell Court, Kuluin: this fabulous family home tucked away at the end of a quiet cul-de-sac, and perfectly positioned on its 812m<sup>2</sup> block to maximise northerly aspect, elevation, natural light, gentle breezes as well as showcase glorious views encompassing ocean and Mount Coolum.

Across two levels the home comprises three bedrooms, three fully tiled modern bathrooms, elegant contemporary kitchen, open plan living, separate rumpus room, upper balcony to savour the views, expansive timber deck on ground level, separate laundry, double lock up garage and double carport; plus onsite parking space for boat/caravan/trailer?and so close to the river, if you haven't

[For full version visit the website](https://www.amberwerchon.com.au)

**Type** : House  
**Price** : Offers on or before 2 October 2024  
**Land Size** : 812 sqm  
**View** : <https://www.amberwerchon.com.au/8123271>



**Steven du Preez**  
07 5430 0888

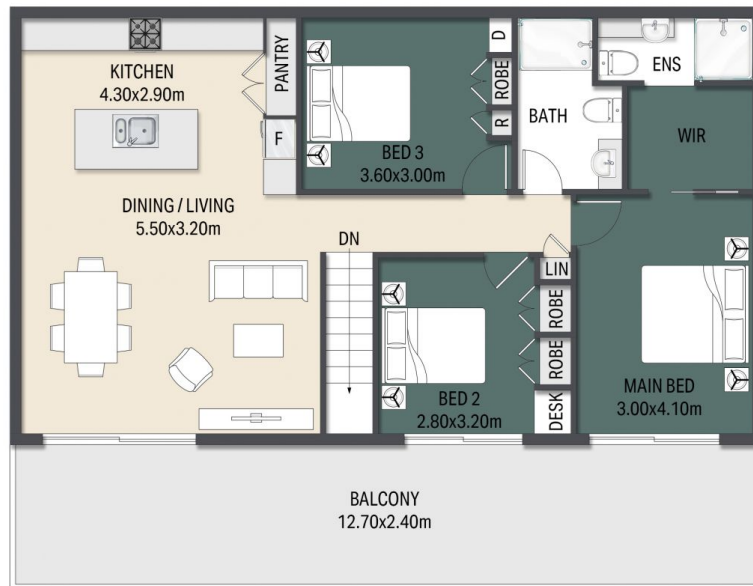


**Rudi du Preez**  
07 5430 0888

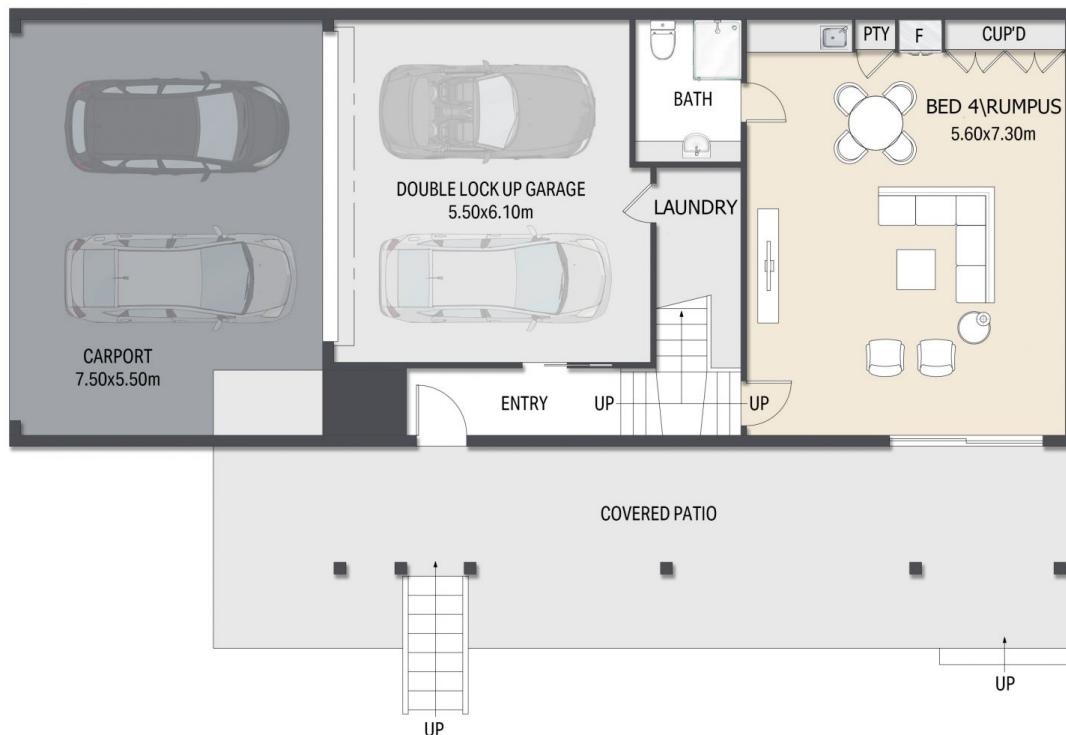
<https://www.amberwerchon.com.au>

# AMBER WERCHON

PROPERTY • PEOPLE



FIRST FLOOR PLAN



GROUND FLOOR PLAN

This floor plan including furniture, fixture measurements and dimensions are approximate and for illustrative purposes only.  
BoxBrownie.com gives no guarantee, warranty or representation as to the accuracy and layout.  
All enquiries must be directed to the agent, vendor or party representing this floor plan.

13 Grenfell Court Kuluin