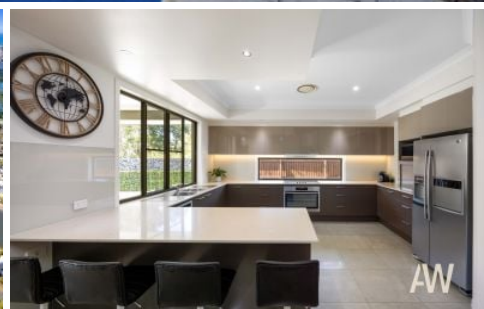


AMBER WERCHON

PROPERTY · PEOPLE



5 Sage Close Mountain Creek QLD

4 🛏 2 🚿 2 🚗

Amber Werchon presents to the market 5 Sage Close, Mountain Creek.

Welcome to your private oasis! This picture-perfect home is positioned on a wraparound block, open on three sides, evoking a great feeling of privacy and unencumbered space. Designed for effortless living and entertaining, this readymade lifestyle haven is brimming with natural light and enjoys a perfect north-easterly aspect.

Step inside to revel in sleek contemporary interiors, comprising of 328 square meters featuring a superb kitchen equipped with top-of-the-line appliances. This modern kitchen is exceptionally large, with expansive countertops, 900mm oven and cooktop, walk in pantry that provide

Type : House
Price : New To Market
Building Size : 328 sqm
Land Size : 723 sqm
View : <https://www.amberwerchon.com.au/8142425>



Todd Forrest
07 5430 0888



Terri-Anne Murray
07 5430 0888

[For full version visit the website](https://www.amberwerchon.com.au)

<https://www.amberwerchon.com.au>



- 4 
- 2 
- 2 



5 Sage Close, MOUNTAIN CREEK

INTERNAL: 275m² EXTERNAL: 53m² TOTAL: 328m² LAND: 723m²

ARTIST'S IMPRESSION ONLY: While every attempt has been made to ensure the accuracy of this floor plan's areas and measurements of doors, windows, rooms and all other items are approximate and no responsibility is taken for any error, omission, or mis-statement. This plan is for illustrative purposes only and should only be used as such by any prospective purchaser www.fratterphoto.com

