

AMBER WERCHON

PROPERTY · PEOPLE



20 Russell Street Shelly Beach QLD

4 3 2

Amber Werchon Property proudly presents 20 Russell Street, Shelly Beach, an architecturally designed stunning home that epitomizes coastal living. Just 350 meters from the iconic Shelly Beach, this prestigious property combines modern design, quality finishes, and ample space for entertaining.

From the moment you step inside, you'll be captivated by this beautifully presented four-bedroom, three-bathroom home, complete with a powder room, double garage, and resort-style swimming pool. 9 foot ceilings, timber floors, and an expansive backyard create a luxurious yet relaxed atmosphere that's perfect for the whole family.

Architecturally crafted to maximize its prime beachside

[For full version visit the website](https://www.amberwerchon.com.au/8146562)

Type : House
Price : New to Market
Land Size : 809 sqm
View : <https://www.amberwerchon.com.au/8146562>



Daniel Mendes
07 5430 0888

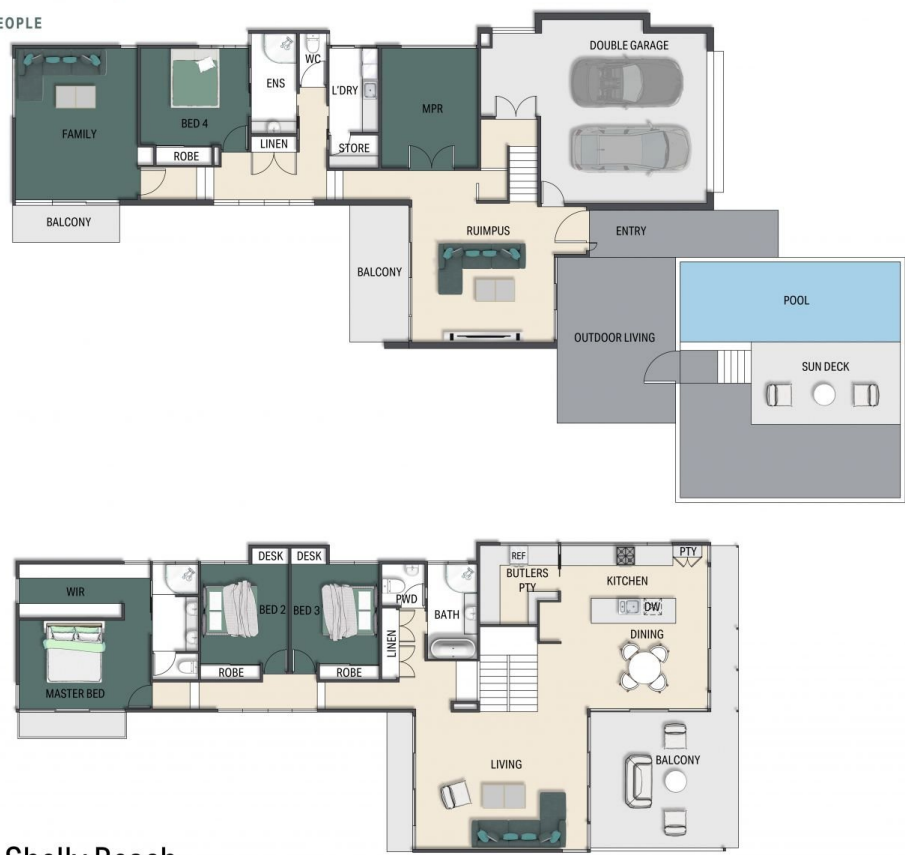


Amber Werchon
07 5430 0888

<https://www.amberwerchon.com.au>

AMBER WERCHON

PROPERTY · PEOPLE



20 Russell Street Shelly Beach