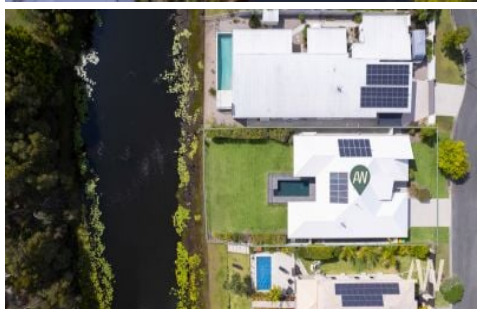


AMBER WERCHON

PROPERTY · PEOPLE



14 Rutherford Place Pelican Waters QLD

4 🛏 2 🚿 2 🚗

Amber Werchon Property is proud to present 14 Rutherford Place Pelican Waters.

Step into a world of elegance and comfort with this stunning contemporary home, perfectly situated on a generous 920sqm waterfront block, offering breathtaking views of the serene golf course. This property is the epitome of family living, designed to blend sophisticated style with practical functionality. From its meticulously crafted interiors to the impressive outdoor spaces, every detail has been thoughtfully planned for comfort, convenience, and entertainment.

As you enter, you'll be greeted by expansive open-plan living and dining areas that flow seamlessly to a spacious

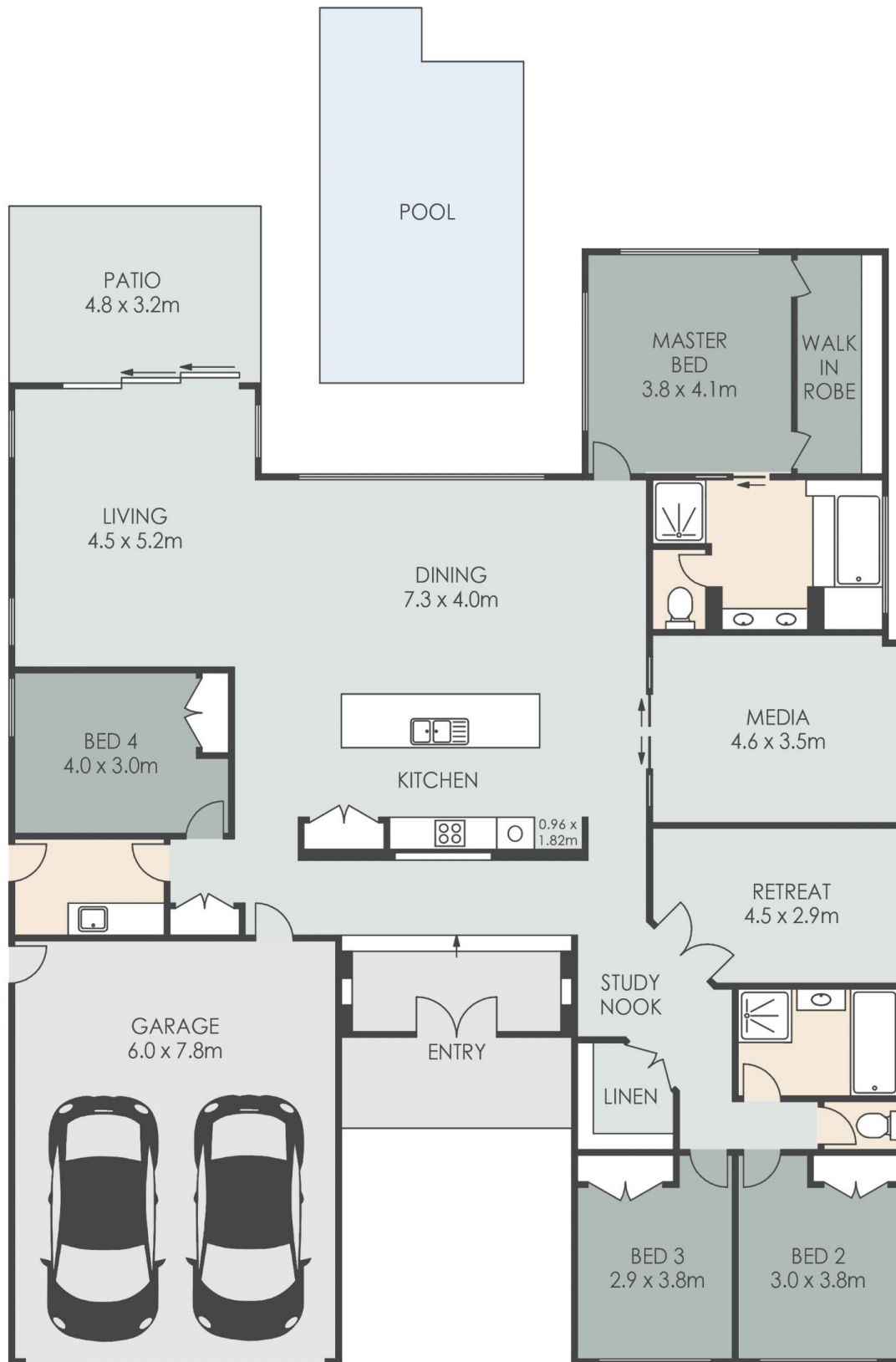
[For full version visit the website](https://www.amberwerchon.com.au/8167614)

Type : House
Price : Auction Onsite 23rd November 5pm
Building Size : 296 sqm
Land Size : 920 sqm
View : <https://www.amberwerchon.com.au/8167614>



Daniel Mendes
07 5430 0888

<https://www.amberwerchon.com.au>



- 4 
- 2 
- 2 



14 Rutherford Place, PELICAN WATERS

INTERNAL: 273m² EXTERNAL: 23m² TOTAL: 296m²

ARTIST'S IMPRESSION ONLY: While every attempt has been made to ensure the accuracy of this floor plan's areas and measurements of doors, windows, rooms and all other items are approximate and no responsibility is taken for any error, omission, or mis-statement. This plan is for illustrative purposes only and should only be used as such by any prospective purchaser www.fratterphoto.com

