

AMBER WERCHON

PROPERTY • PEOPLE



2 Kuranda Close Buderim QLD

4 3 2

Amber Werchon Property proudly presents to the market 2 Kuranda Close, Buderim.

Nestled in a quiet cul-de-sac within the exclusive 'Rainforest Retreat' estate, this near-new, high-quality home offers contemporary family living in a prime Buderim location. Set on a 660m² landscaped corner block, it's a private haven with seamless access to Buderim Village, Sippy Downs shopping precincts, Sunshine Coast's renowned schools, and stunning beaches.

Step inside to find a thoughtful layout with four generous bedrooms, three luxurious bathrooms, two separate living areas, and a sparkling in-ground pool ideal for family enjoyment or relaxation. The heart of the home is the

[For full version visit the website](https://www.amberwerchon.com.au/818)

Type	: House
Price	: Contact Agent
Building Size	: 316 sqm
Land Size	: 660 sqm
View	: https://www.amberwerchon.com.au/818 1459



Erin Carter
07 5430 0888

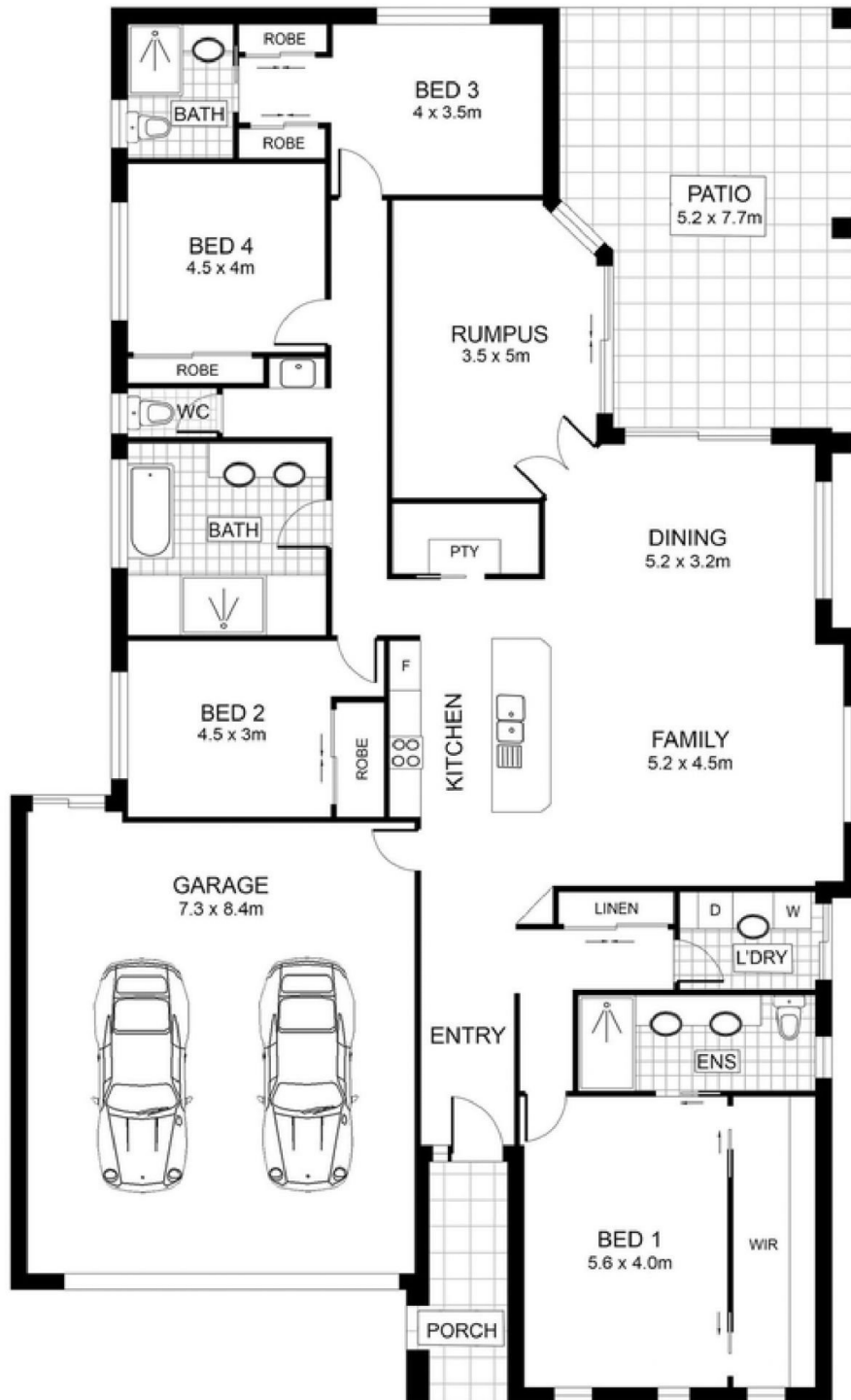


Sally Hope
07 5430 0888

<https://www.amberwerchon.com.au>

AMBER WERCHON

PROPERTY · PEOPLE



INTERNAL AREA : 215 SQM
GARAGE AREA : 58 SQM
EXTERNAL AREA : 43 SQM
TOTAL AREA : 316 SQM

2 Kuranda Close

Buderim

This floor plan is conceptual only. It is provided for illustrative purposes only and should not be relied upon. We make no guarantee as to the accuracy of this plan. All interested parties should make and rely on their own enquiries in determining the accuracy of the information contained in this floor plan.