

AMBER WERCHON

PROPERTY · PEOPLE



6 Breeze Close Nambour QLD

3  2  1 

Amber Werchon Property presents to the market, 6 Breeze Court, Nambour: this ultra-neat and tidy contemporary home on a fully fenced block, tucked away at the end of a quiet cul-de-sac, in the family-friendly 'Creekside' enclave, offers superb entry level buying as well as an attractive investment or downsizing opportunity.

Across a single level offering easy-care living for all ages and stages of life, the home comprises three bedrooms, two bathrooms, two separate living areas, study nook, central modern kitchen, covered timber patio, and extra-large single garage with storage and laundry facilities on a fully fenced 400m².

Split system air-conditioning in both living areas, ceiling

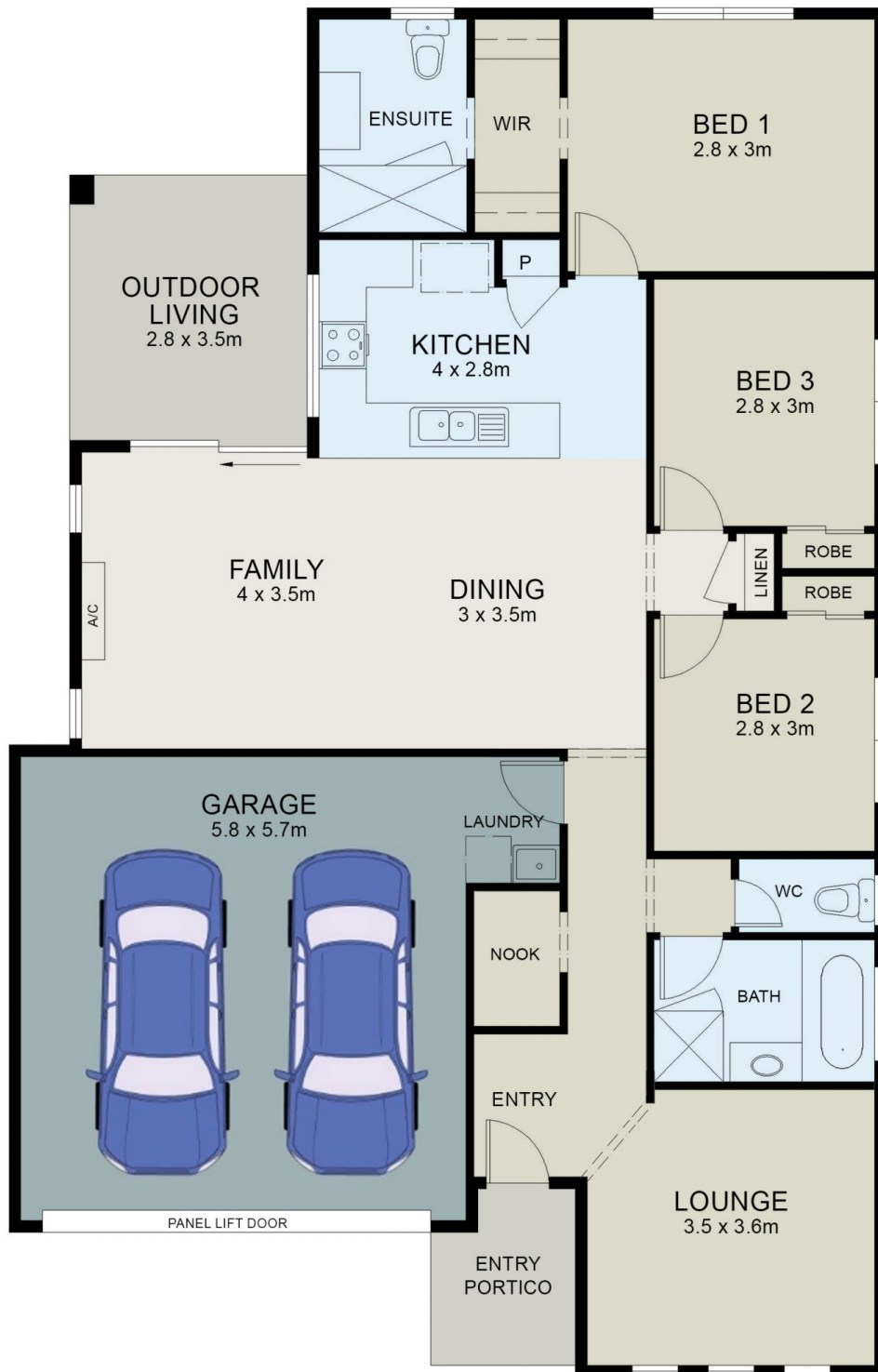
[For full version visit the website](https://www.amberwerchon.com.au)

Type : House
Price : Offers Over \$765,000
Land Size : 400 sqm
View : <https://www.amberwerchon.com.au/8186328>



John Cutuli
07 5430 0888

<https://www.amberwerchon.com.au>



(Floor Plan For Illustrative Purposes Only)

All information contained herein is gathered from all sources we believe to be reliable. However we cannot guarantee its accuracy and interested parties should rely on their own enquiries

6 Breeze Close, Nambour