

# AMBER WERCHON

PROPERTY · PEOPLE



## 1 Rakumba Place Mountain Creek QLD

3 1 2

Amber Werchon Property presents to the market, 1 Rakumba Place, Mountain Creek. This great starter home is set on a flat 629m<sup>2</sup> corner allotment in an established blue chip area of Mountain Creek.

Featuring three bedrooms, one bathroom, with renovated kitchen, lounge, dining and laundry areas. Located opposite an enormous green park, 1 Rakumba Place offers that rare real estate opportunity; the chance to secure a property in an enviable location that can be sculpted into a dream home, at a price that definitely won't break the bank.

Inside, the steel framed house enjoys lots of natural light and benefits from a surprisingly spacious single level floor

[For full version visit the website](https://www.amberwerchon.com.au/8189653)

**Type** : House  
**Price** : New to Market  
**Land Size** : 629 sqm  
**View** : <https://www.amberwerchon.com.au/8189653>

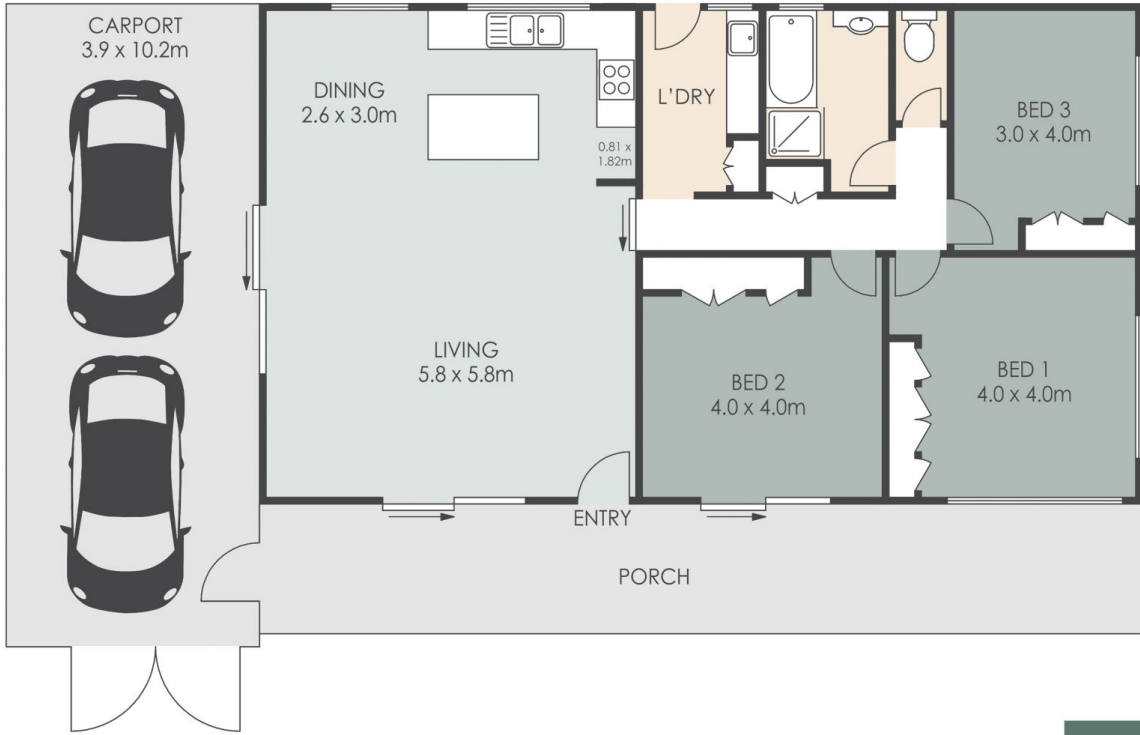


**Terri-Anne Murray**  
07 5430 0888



**Tori Masten**  
07 5430 0888

<https://www.amberwerchon.com.au>



- 3 
- 1 
- 2 



## 1 Rakumba Street, Mountain Creek

INTERNAL: 100m<sup>2</sup> EXTERNAL: 67m<sup>2</sup> TOTAL: 167m<sup>2</sup> LAND: 629m<sup>2</sup>

ARTIST'S IMPRESSION ONLY: While every attempt has been made to ensure the accuracy of this floor plan's areas and measurements of doors, windows, rooms and all other items are approximate and no responsibility is taken for any error, omission, or mis-statement. This plan is for illustrative purposes only and should only be used as such by any prospective purchaser [www.fratterphoto.com](http://www.fratterphoto.com)

